

Riveting Squeezers

For applications requiring the special "Alligator Jaws or C-Yokes"



Alligator Jaws mounting versions

PART NUMBER	MODEL	EQUIVALENT STANDARD MODEL
T019138	CP0214ANPEL	CP0214ANBEL/ANFEL/ANGEL without jaws
T018997	CP0214ENPEL	CP0214ENBEL/ENFEL/ENGEL without jaws
T025405	CP0351ASNEL	CP0351ASKEL without jaws

C-Yoke mounting versions

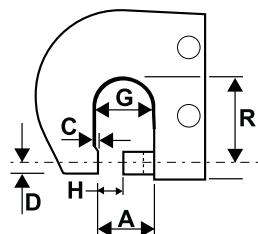
PART NUMBER	MODEL	EQUIVALENT STANDARD MODEL
T018677	CP0214CENEL	CP0214CELEL without yoke
T018430	CP0214FANEL	CP0214FALEL without yoke
T022493	CP0341CUNEL	CP0341CUDEL without yoke
T007772	CP0351CUNEL	CP0351CUDEL without yoke

PIC REF.	MODEL	PART NUMBER	CAPACITY				STANDARD YOKE DIMENSIONS				MAX FORCE		MOVING PLUNGER			
			LIGHT		HARD		REACH		CLOSED HEIGHT		(90 psi/6.2 bar)	kN	lb	MAX TRAVEL		FINAL PART OF STROKE AT MAX. FORCE
mm	in.	mm	in.	mm	in.	mm	in.	mm	in.	mm				in.	mm	in.
C-Yoke (single cylinder)																
A	CP0214CELEL*	T012344	3.2	1/8	2.4	3/32	38.1	1-1/2	17.5	11/16	13.35	3,000	14.3	9/16	1.3	0.050
A	CP0214SETEL**	T023474	3.2	1/8	2.4	3/32	38.1	1-1/2	17.5	11/16	13.35	3,000	14.3	9/16	1.3	0.050
C	CP0351CUDEL*	T008955	4.8	3/16	4.0	5/32	54.0	2-1/8	19.8	25/32	26.70	6,000	14.3	9/16	3.2	0.125
C-Yoke (tandem cylinder)																
A	CP0214FALEL*	T013152	4.8	3/16	4.0	5/32	38.1	1-1/2	17.5	11/16	26.70	6,000	14.3	9/16	1.6	0.063
A	CP0214KETEL**	T023475	4.8	3/16	4.0	5/32	38.1	1-1/2	17.5	11/16	26.70	6,000	14.3	9/16	1.6	0.063
C	CP0351FUDEL*	T012608	6.4	1/4	5.6	7/32	54.0	2-1/8	19.8	25/32	53.40	12,000	14.3	9/16	3.2	0.125
C-Yoke (pneudraulic™)																
D	CP0341CUDEL**	T022512	7.1	9/32	6.4	1/4	54.0	2-1/8	25.4	1	60.10	13,500	31.8	1-1/4	Full stroke	
Alligator (single cylinder)																
B	CP0214ANBEL*	T012343	3.2	1/8	2.4	3/32	38.1	1-1/2	22.2	7/8	13.35	3,000	15.9	5/8	1.3	0.050
B	CP0214ANFEL*	T018671	2.4	3/32	2.4	3/32	57.1	2-1/4	22.2	7/8	9.79	2,200	22.2	7/8	2.4	0.094
B	CP0214ANGEL*	T018672	2.4	3/32	1.6	1/16	76.2	3	22.2	7/8	8.01	1,800	31.8	1-1/4	1.4	0.056
E	CP0351ASGEL*	T007783	4.0	5/32	3.2	1/8	73.0	2-7/8	22.2	7/8	23.14	5,200	15.9	5/8	3.2	0.125
E	CP0351ASKEL*	T007773	3.2	1/8	2.4	3/32	127.0	5	22.2	7/8	15.13	3,400	34.0	1-3/8	4.8	0.188
E	CP0351ASVEL*	T009582	3.2	1/8	2.4	3/32	232.0	9-1/8	19.1	3/4	13.35	3,000	42.9	1-11/16	1.6	0.063
Alligator (tandem cylinder)																
B	CP0214ENGEL*	T018164	3.2	1/8	2.4	3/32	76.2	3	22.2	7/8	15.13	3,400	31.8	1-1/4	2.6	0.104
B	CP0214ENFEL*	T018163	4.0	5/32	3.2	1/8	57.1	2-1/4	22.2	7/8	19.14	4,300	22.2	7/8	2.4	0.094
B	CP0214ENBEL*	T018678	4.8	3/16	4.0	5/32	38.1	1-1/2	22.2	7/8	26.70	6,000	15.9	5/8	1.6	0.063
E	CP0351ESKEL*	T012603	4.8	3/16	4.0	5/32	127.0	5	22.2	7/8	30.26	6,800	34.0	1-3/8	4.8	0.188
E	CP0351ESREL*	T012604	4.8	3/16	4.0	5/32	178.0	7	38.1	1-1/2	26.70	6,000	42.9	1-11/16	4.8	0.188
E	CP0351ESVEL*	T012605	4.8	3/16	4.0	5/32	232.0	9-1/8	19.1	3/4	26.70	6,000	42.9	1-11/16	1.6	0.063
E	CP0351ESGEL*	T012602	6.4	1/4	4.8	3/16	73.0	2-7/8	22.2	7/8	46.28	10,400	15.9	5/8	3.2	0.125

* CR1 / ** CR2

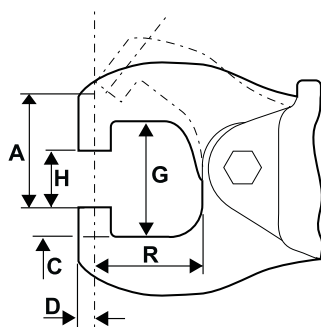
Technical data

C-Yoke



Model	A		C		D		G		H		R	
	mm	in.	mm	in.	mm	in.	mm	in.	mm	in.	mm	in.
CP0214CELEL	32	1-1/4	-	-	5	3/16	32	1-1/4	17.5	11/16	38	1-1/2
CP0214FALEL	32	1-1/4	-	-	5	3/16	32	1-1/4	17.5	11/16	38	1-1/2
CP0214SETEL	32	1-1/4	-	-	6.4	1/4	32	1-1/4	17.5	11/16	38	1-1/2
CP0214KETEL	32	1-1/4	-	-	6.4	1/4	32	1-1/4	17.5	11/16	38	1-1/2
CP0351CUDEL	39	1-17/32	-	-	5.5	7/32	29	1-5/32	20	25/32	54	2-1/8
CP0351FUDEL	39	1-17/32	-	-	5.5	7/32	29	1-5/32	20	25/32	54	2-1/8
CP0341CUDEL	57	2-1/4	3	1/8	9	11/32	70	2-3/4	25	1	54	2-1/8

Alligator Jaw



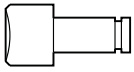
Model	A		C		D		G		H		R	
	mm	in.	mm	in.	mm	in.	mm	in.	mm	in.	mm	in.
CP0214ANGEL	54	2-1/8	-	-	5.5	7/32	54	2-1/8	22	7/8	76	3
CP0214ENGEL	54	2-1/8	-	-	5.5	7/32	54	2-1/8	22	7/8	76	3
CP0214ANFEL	48	1-7/8	-	-	5.5	7/32	54	2-1/8	22	7/8	57	2-1/4
CP0214ENFEL	48	1-7/8	-	-	5.5	7/32	54	2-1/8	22	7/8	57	2-1/4
CP0351ANBEL	38	1-1/2	-	-	5.5	7/32	41	1-5/8	22	7/8	38	1-1/2
CP0214ENBEL	38	1-1/2	-	-	5.5	7/32	41	1-5/8	22	7/8	38	1-1/2
CP0351ASVEL	62	2-7/16	-	-	5.5	7/32	56	2-3/16	19	3/4	232	9-1/8
CP0351ESVEL	62	2-7/16	-	-	5.5	7/32	56	2-3/16	19	3/4	232	9-1/8
CP0351ESREL	81	3-3/16	-	-	5.5	7/32	51	2	38	1-1/2	178	7
CP0351ASKEL	57	2-1/4	-	-	5.5	7/32	41	1-5/8	22	7/8	127	5
CP0351ESKEL	57	2-1/4	-	-	5.5	7/32	41	1-5/8	22	7/8	127	5
CP0351ASGEL	38	1-1/2	-	-	5.5	7/32	41	1-5/8	22	7/8	73	2-7/8
CP0351ASGEL	38	1-1/2	-	-	5.5	7/32	41	1-5/8	22	7/8	73	2-7/8

Jaw and Yoke Terminology:
 (rivet sets are not in place in this illustration)
 A Throat gap
 C Anvil work clearance
 D Lower offset
 G Total yoke gap
 H Closed height
 R Reach

MODEL	CYLINDER TYPE	RIVET SET TYPE	LENGTH		WEIGHT		SOUND	
			mm	in.	kg	lb	LEVEL dB(A)	POWER dB(A)
CP0214ANBEL	Single	CR-1 (ø 4.8mm - 3/16")	233	9-3/16	1.7	3.75	90	101
CP0214ANFEL	Single	CR-1 (ø 4.8mm - 3/16")	254	10	1.9	4.25	90	101
CP0214ANGEL	Single	CR-1 (ø 4.8mm - 3/16")	273	10-3/4	2.0	4.50	90	101
CP0214CELEL	Single	CR-1 (ø 4.8mm - 3/16")	262	10-5/16	2.0	4.50	90	101
CP0214ENBEL	Tandem	CR-1 (ø 4.8mm - 3/16")	303	11-15/16	2.2	4.75	90	101
CP0214ENFEL	Tandem	CR-1 (ø 4.8mm - 3/16")	324	12-3/4	2.4	5.25	90	101
CP0214ENGEL	Tandem	CR-1 (ø 4.8mm - 3/16")	343	13-1/2	2.5	5.50	90	101
CP0214FALEL	Tandem	CR-1 (ø 4.8mm - 3/16")	356	14	2.5	5.50	90	101
CP0214KETEL	Tandem	CR-2 (ø 6.4mm - 1/4")	356	14	2.5	5.50	90	101
CP0214SETEL	Single	CR-2 (ø 6.4mm - 1/4")	262	10-5/16	2.0	4.50	90	101
CP0341CUDEL	Pneumatic TM	CR-2 (ø 6.4mm - 1/4")	505	19-7/8	6.1	13.50	85	-
CP0351ASGEL	Single	CR-1 (ø 4.8mm - 3/16")	495	19-1/2	7.1	15.75	96	107
CP0351ASKEL	Single	CR-1 (ø 4.8mm - 3/16")	549	21-5/8	9.0	19.75	96	107
CP0351ASVEL	Single	CR-1 (ø 4.8mm - 3/16")	654	25-3/4	11.9	26.25	96	107
CP0351CUDEL	Single	CR-1 (ø 4.8mm - 3/16")	445	17-1/2	5.7	12.50	96	107
CP0351ESGEL	Tandem	CR-1 (ø 4.8mm - 3/16")	603	23-3/4	8.4	18.50	96	107
CP0351ESKEL	Tandem	CR-1 (ø 4.8mm - 3/16")	657	25-7/8	10.2	22.50	96	107
CP0351ESREL	Tandem	CR-1 (ø 4.8mm - 3/16")	708	27-7/8	12.2	27	96	107
CP0351ESVEL	Tandem	CR-1 (ø 4.8mm - 3/16")	762	30	13.2	29	96	107
CP0351FUDEL	Tandem	CR-1 (ø 4.8mm - 3/16")	552	21-3/4	6.9	15.25	96	107

Air inlet 1/4" NPTF

Riveting Squeezers - Selection

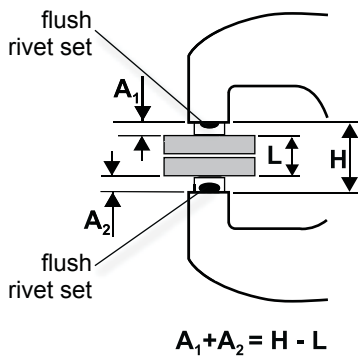
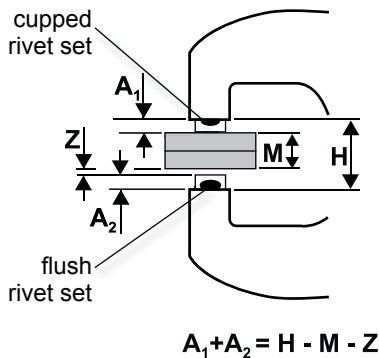
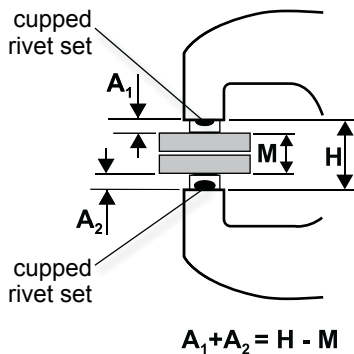


Compression Rivet Sets

(Complete with retaining rings)

Minimum Order: 6 of any part number.

Note: The illustration above shows one rivet set. Two rivet sets are required to be used per tool. Part numbers are for one rivet set only.



SELECTING RIVET SETS TO FIT CP0214, CP0341 and CP0351 RIVETERS

To develop maximum power, the riveter must drive (set) the rivet at the end of the riveter's stroke (with the exception of the CP0341 which develops max power throughout its full stroke). For maximum power the combined length of the two rivet sets must be of the correct length.

Determine the correct lengths as follows:

1) When two cupped rivet sets are used:

The length of the body dimensions of the rivet sets (A1, A2) should equal the closed height dimension of the yoke (H) minus the total thickness of material being riveted together.

2) When one cupped set and one flush set are used:

The length of the body dimensions of the two rivet sets (A1, A2) should equal the closed height dimension of the yoke (H) minus the total thickness of the material being riveted (M) and the height of the finished rivet head (Z) compressed by the flush set (A).

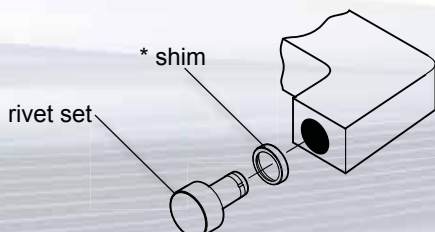
3) When two flush sets are used:

The length of the body dimensions of the two rivet sets (A1, A2) should equal the closed height dimension of the yoke (H) minus the overall length of the rivet (L) after it is compressed.

If necessary, select rivet sets a little short and shim to the correct length using spacer shims.

* Set Length Spacer Shims

TYPE RIVET	PART NUMBERS OF HARDENED SHIMS		
	0.4mm thick (1/64")	0.8mm thick (1/32")	1.6mm thick (1/16")
CR-1	P083254	P083255	P083256
CR-2	-	P083257	P083258

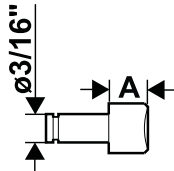


Riveting Squeezers - Rivet sets

RIVET		'A'		AN-435	AN-430	AN-455	AN-456	AN-470	AN-442
DIAMETER		BODY		BUTTON	ROUND	BRAZIER	BRAZIER MODIFIED	UNIVERSAL	FLAT
mm	in.	mm	in.	PART NUMBER					

CR-1 SHANK RIVET SETS FOR CP0214 and CP0351 - CUPPED SETS

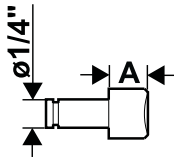
(C-Yoke tools - CP0214 CELEL, FALEL, CUDEL, FUDEL + all Alligator Yoke tools)



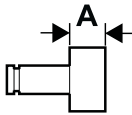
2.4	3/32	6.4	1/4	P091601	P089370	P089390	P089410	P089430	P091621
2.4	3/32	9.5	3/8	P091602	P089371	P089391	P089411	P089431	P091622
2.4	3/32	12.7	1/2	-	-	-	P089412	P089432	P091623
3.2	1/8	6.4	1/4	P091606	P089375	P089395	P053826	P089435	P091626
3.2	1/8	9.5	3/8	P091607	P089376	-	P053827	P089436	P091627
3.2	1/8	12.7	1/2	P091608	P089377	P089397	-	P089437	P091628
4.0	5/32	6.4	1/4	P091611	P089380	P089400	P053831	P089440	P091631
4.0	5/32	9.5	3/8	P091612	P089381	P089401	P053832	P089441	P091632
4.0	5/32	12.7	1/2	P091613	P089382	P089402	P053833	P089442	P091633
4.8	3/16	6.4	1/4	P091616	P089385	P089405	P053836	P089445	P091636
4.8	3/16	9.5	3/8	P091617	P089386	P089406	P053837	P089446	P091637
4.8	3/16	12.7	1/2	P091618	P089387	P089407	P053838	P089447	P091638

CR-2 SHANK RIVET SETS FOR CP0214 and CP0341 - CUPPED SETS

(C-Yoke tools - CP0214 SETEL, KETEL + CP0341 CUDEL)

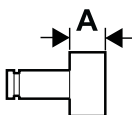


3.2	1/8	6.4	1/4	-	-	-	-	P089510	P091661
3.2	1/8	9.5	3/8	P091642	-	-	-	P089511	-
3.2	1/8	12.7	1/2	-	-	-	-	P089512	P091663
4.0	5/32	6.4	1/4	-	P089455	-	-	P089515	-
4.0	5/32	9.5	3/8	-	-	-	-	P089516	P091667
4.0	5/32	12.7	1/2	P091648	-	-	-	P089517	P091668
4.8	3/16	6.4	1/4	-	P089460	P089480	-	P089520	P091671
4.8	3/16	9.5	3/8	-	P089461	P089481	-	P089521	P491672
4.8	3/16	12.7	1/2	P091653	-	P089482	-	P089522	P091673
6.4	1/4	6.4	1/4	-	P089465	P089485	-	P089525	P091676
6.4	1/4	9.5	3/8	-	P089466	P089486	-	P089526	-
6.4	1/4	12.7	1/2	-	P089467	-	-	P089527	P091678



FLUSH SETS for any rivet size

SHANK SIZE	'A' BODY LENGTH					
	3.2mm (1/8")	6.4mm (1/4")	9.5mm (3/8")	12.7mm (1/2")	15.8mm (5/8")	19mm (3/4")
CR-1 (ø 4.8mm 3/16")	P089495	P089496	P089497	P089498	P089499	P089500
CR-2 (ø 6.4mm 1/4")	-	P089501	P089502	P089503	P089504	P089505



SOFT SET BLANKS

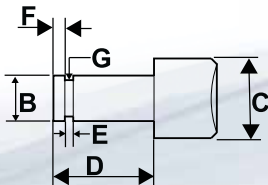
TYPE OF RIVET SET SHANK	'A' LENGTH		BODY DIAMETER		PART NUMBER
	mm	in.	mm	in.	
CR-1 (ø 4.8mm 3/16")	19.1	3/4	15.9	5/8	P093672
CR-2 (ø 6.4mm 1/4")	19.1	3/4	19.1	3/4	P093673

SET LENGTH SPACER SHIMS

TYPE OF RIVET SET SHANK	PART NUMBERS OF HARDENED SHIMS		
	0.4mm (1/64")	0.8mm (1/32")	1.6mm (1/16")
CR-1	P083254	P083255	P083256
CR-2	-	P083257	P083258

RIVET SET RETAINER RING

TYPE OF RIVET SET SHANK	PART NUMBER
CR-1	P071916
CR-2	P071917



* 'C' dimension is for flush set only. 'C' varies on cupped sets according to rivet size and type of head.

SHANK DIMENSIONS FOR RIVET SETS

For CP0214, CP0351 and CP0341 Compression Riveters

TYPE OF RIVET SET SHANK	B		C*		D		E		F		G	
	mm	in.	mm	in.	mm	in.	mm	in.	mm	in.	mm	in.
CR-1 (ø 4.8mm 3/16")	4.75-4.72	0.187-0.186	12.7	1/2	12.7	1/2	3.45-3.38	0.136-0.133	1.6	1/16	3.23-3.12	0.127-0.123
CR-2 (ø 6.4mm 1/4")	6.42-6.40	0.249-0.248	15.9	5/8	15.9	5/8	3.45-3.38	0.136-0.133	2.4	3/32	4.80-4.70	0.189-0.185