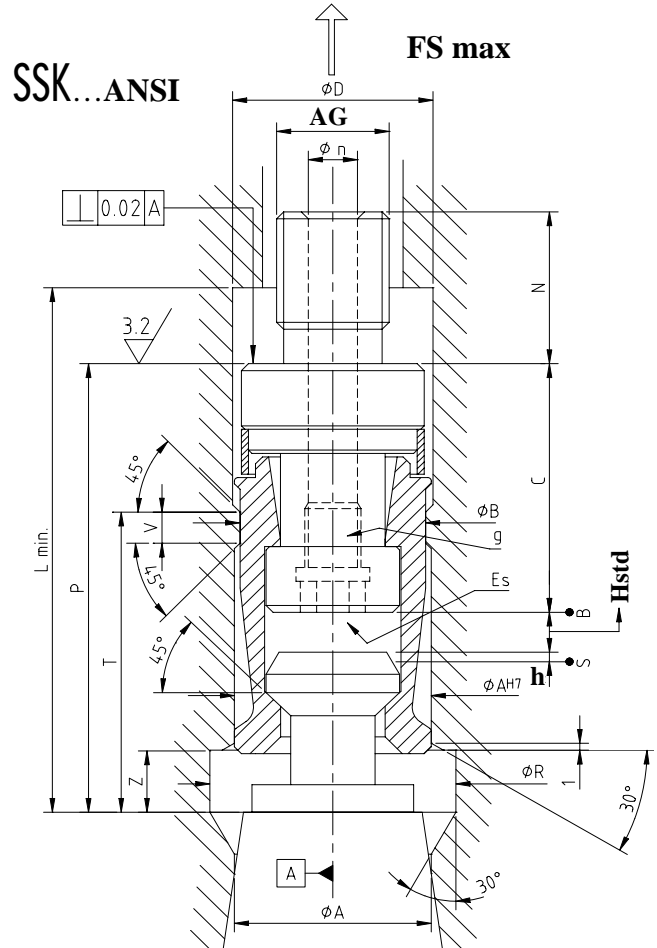
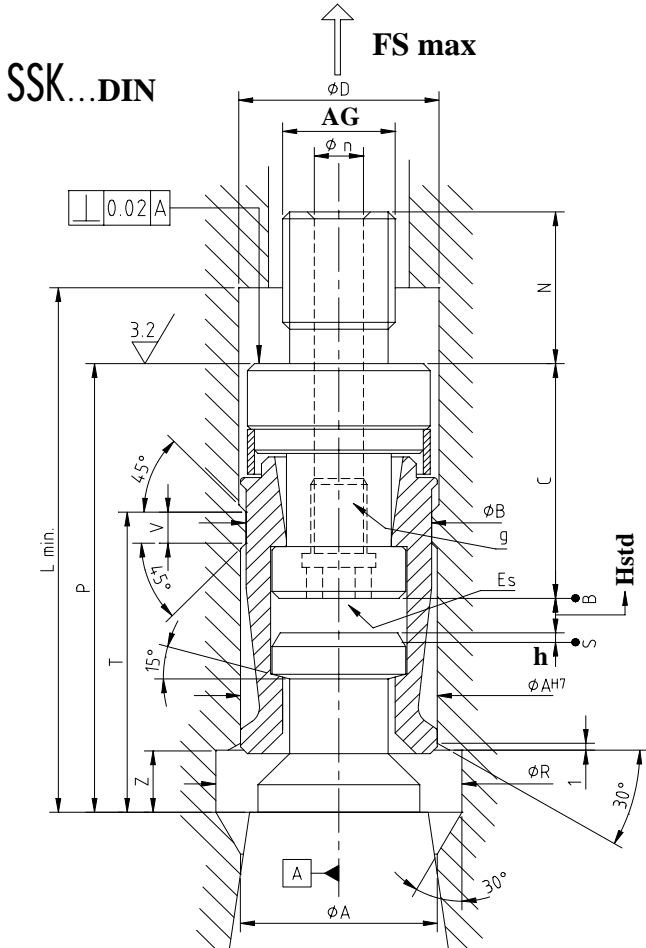




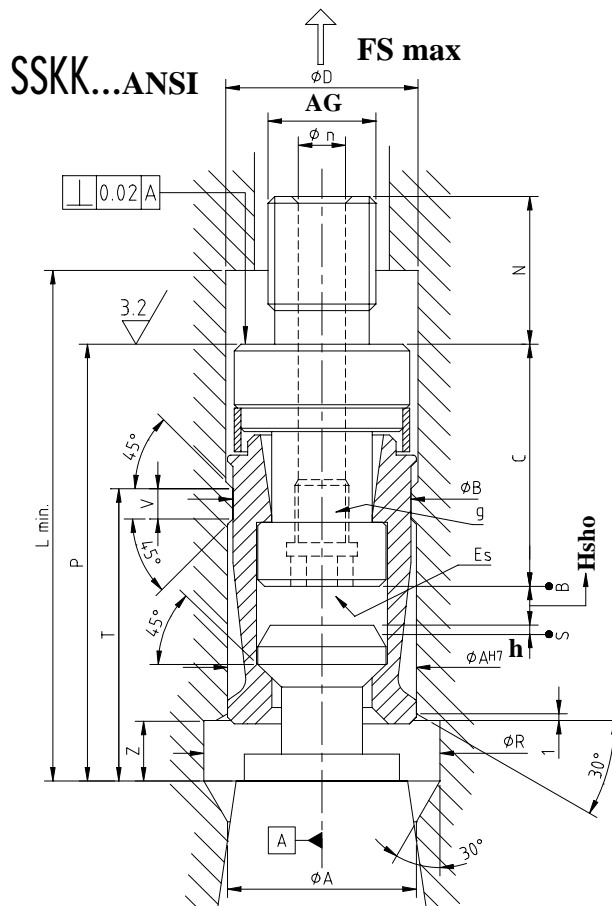
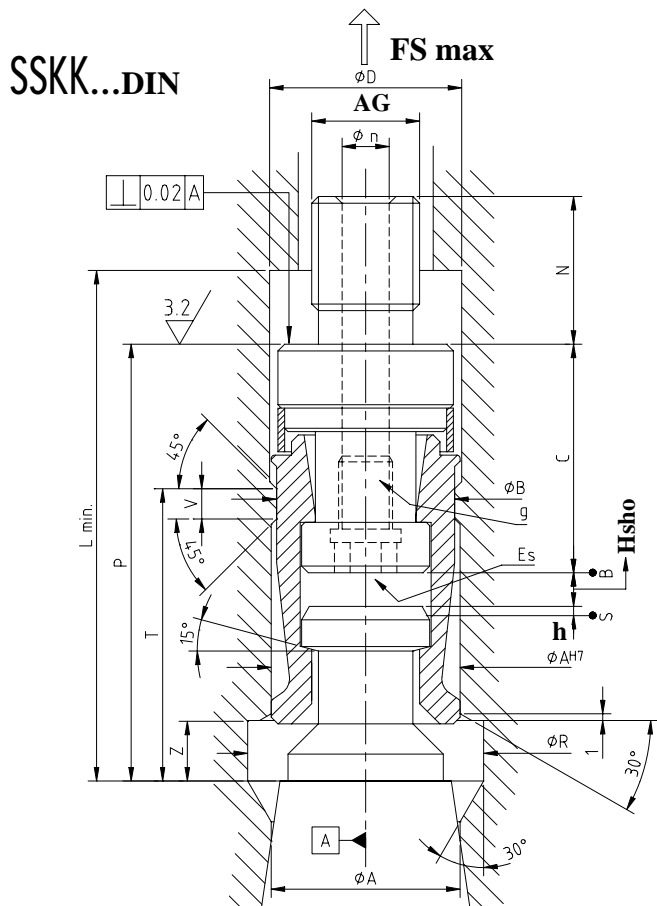
NOTE					
FS max	Forza Bloccaggio kN	Clamping force kN	Spannkraft kN	Force de blocage kN	Fuerza de bloqueo kN
B	Posizione di bloccaggio	Clamping position	Spannposition	Position de blocage	Posicion de bloqueo
S	Posizione di sbloccaggio	Unblocking position	Abspannposition	Position de déblocage	Posición de desbloqueo
ES	Esagono di manovra	Operating hexagon	Bedienungsechskant	Hexagone manoeuvre	Exagóno de maniobra
AG	Filetto esterno	External thread	aussen Gewinde	Filet extérieur	Rosca exterior
g	Filetto sicurezza	Safety thread	Sicherheitsgewinde	Assurance Filet	Rosca de seguridad
Hstd	Corsa sbloccaggio standard	Unblocking stroke standard	Abspannhub standard	Course de déblocage standard	Carrera de desbloqueo normal
h	Corsa di espulsione	Expulsion stroke	Ausstosshub	Course d'expulsion	Carrera de expulsión
M	Momento forza serraggio	Clamping torque force	Anziehmoment	Moment force de serrage	Momento fuerza de bloqueo



TYPE	ISO	CODE	ISO	CODE	ISO	CODE	ISO	CODE	ISO	CODE
SSK.....DIN	30	38.102	40	38.104	45	38.106	50	38.108	60	38.110
SSK.....ANSI	30	38.112	40	38.114	45	38.116	50	38.118	60	38.120
ϕ A H7	mm	19		28		36		43		62
ϕ B	mm	17.8 (+0.1)		26.4 (+0.1)		33.7 (+0.1)		40.4 (+0.1)		58.6 (+0.1)
ϕ D min	mm	19.5		28.5		36.5		43.5		62.5
ϕ R	mm	24		35		45		54		74
AG	mm			M 16x1.5		M 18x1.5		M 22x1.5		M 30x1.5
g	mm			M 8		M 8		M 10		M 16
L min	mm	50		76		84		95		115
P	mm	47		65		75		87		110
N	mm	20		22		30		30		35
T	mm	37 (-0.1)		43.5 (-0.2)		50 (-0.2)		58 (-0.2)		72.5 (-0.2)
Z	mm	7.5		9		12		14		18
V	mm	3.5		4.5		4.5		5		6.5
ϕ n	mm	4		7		7		8.5		15
C DIN	mm	19.5		34		38		45		59.5
C ANSI	mm	33		44.7		48		54.5		62
Hstd DIN	mm	3.5		5		7		8		10.5
Hstd ANSI	mm	2.5		4.2		6		7		10
h	mm	2 max		2 max		2 max		2 max		2 max
FS max	kN	10		18		25		35		70
M	Nm	30		65		110		160		450
ES	mm	6		8		8		10		17

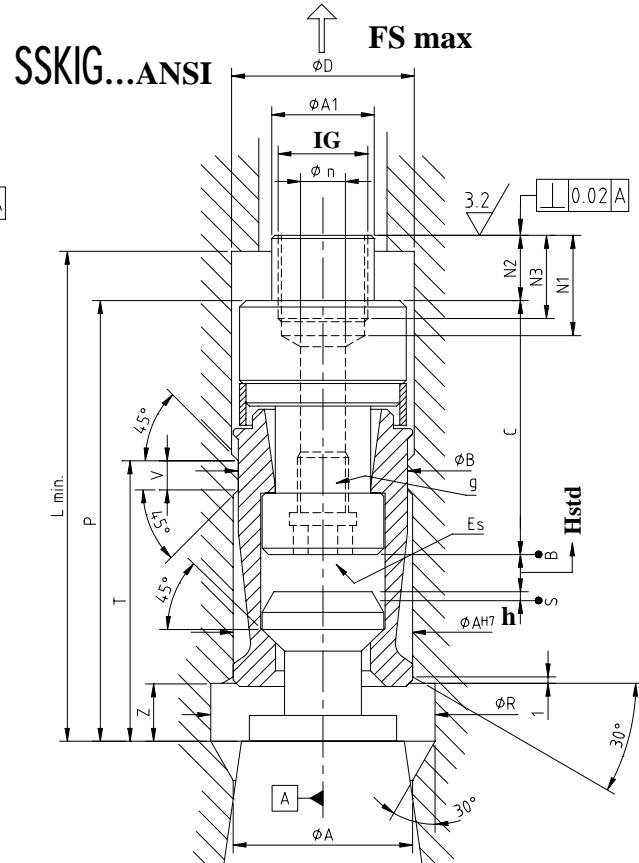
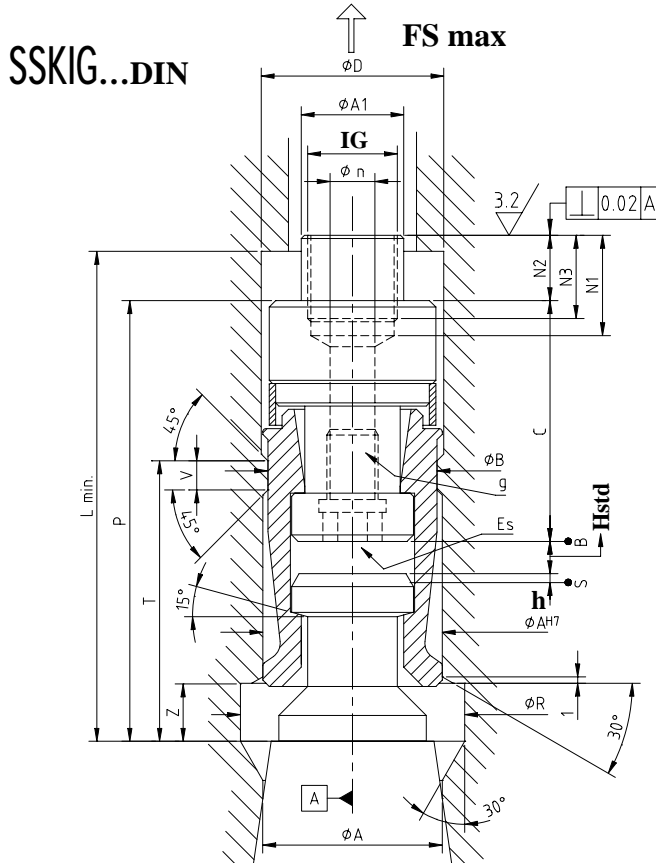


NOTE					
FS max	Forza Bloccaggio kN	Clamping force kN	Spannkraft kN	Force de blocage kN	Fuerza de bloqueo kN
B	Posizione di bloccaggio	Clamping position	Spannposition	Position de blocage	Posición de bloqueo
S	Posizione di sbloccaggio	Unlocking position	Abspannposition	Position de déblocage	Posición de desbloqueo
ES	Esagone di manovra	Operating hexagon	Bedienungssechskant	Hexagone manoeuvre	Exagòno de maniobra
AG	Filetto esterno	External thread	aussen Gewinde	Filét extérieur	Rosca exterior
g	Filetto sicurezza	Safety thread	Sicherheitsgewinde	Assurance Fillet	Rosca de seguridad
Hsho	Corsa sbloccaggio corta	Unlocking short stroke	Abspannhub kurz	Course de déblocage courte	Carrera de desbloqueo corta
h	Corsa di espulsione	Expulsion stroke	Ausstosshub	Course d'expulsion	Carrera de expulsión
M	Momento forza serraggio	Dynamic balancing	Anziehmoment	Moment force de serrage	Momento fuerza de bloqueo



TYPE	ISO	CODE	ISO	CODE	ISO	CODE	ISO	CODE	ISO	CODE
SSKK.....DIN	30	38.122	40	38.124	45	38.126	50	38.128	60	38.130
SSKK.....ANSI			40	38.134	45	38.136	50	38.138	60	38.140
ϕ A H7	mm	19		28		36		43		62
ϕ B	mm	17.8 (+0.1)		26.4 (+0.1)		33.7 (+0.1)		40.4 (+0.1)		58.6 (+0.1)
ϕ D min	mm	19.5		28.5		36.5		43.5		62.5
ϕ R	mm	24		35		45		54		74
AG	mm	M 10		M 16x1.5		M 18x1.5		M 22x1.5		M 30x1.5
g	mm	---		M 8		M 8		M 10		M 16
L min	mm	50		76		84		95		115
P	mm	47		65		75		87		110
N	mm	20		22		30		30		35
T	mm	37 (-0.1)		43.5 (-0.2)		50 (-0.2)		58 (-0.2)		72.5 (-0.2)
Z	mm	7.5		9		12		14		18
V	mm	3.5		4.5		4.5		5		6.5
ϕ n	mm	4		7		7		8.5		15
C DIN	mm	20.5		35.5		41.5		49.5		63.5
C ANSI	mm	--		45.4		50.5		58		65.4
Hsho DIN	mm	2.5		3.5		3.5		3.5		6.5
Hsho ANSI	mm	--		3.5		3.5		3.5		6.5
h	mm	0.5 min		0.5 min		0.5 min		0.5 min		0.5 min
FS max	kN	10		18		25		35		70
M	Nm	30		65		110		160		450
ES	mm	6		8		8		10		17

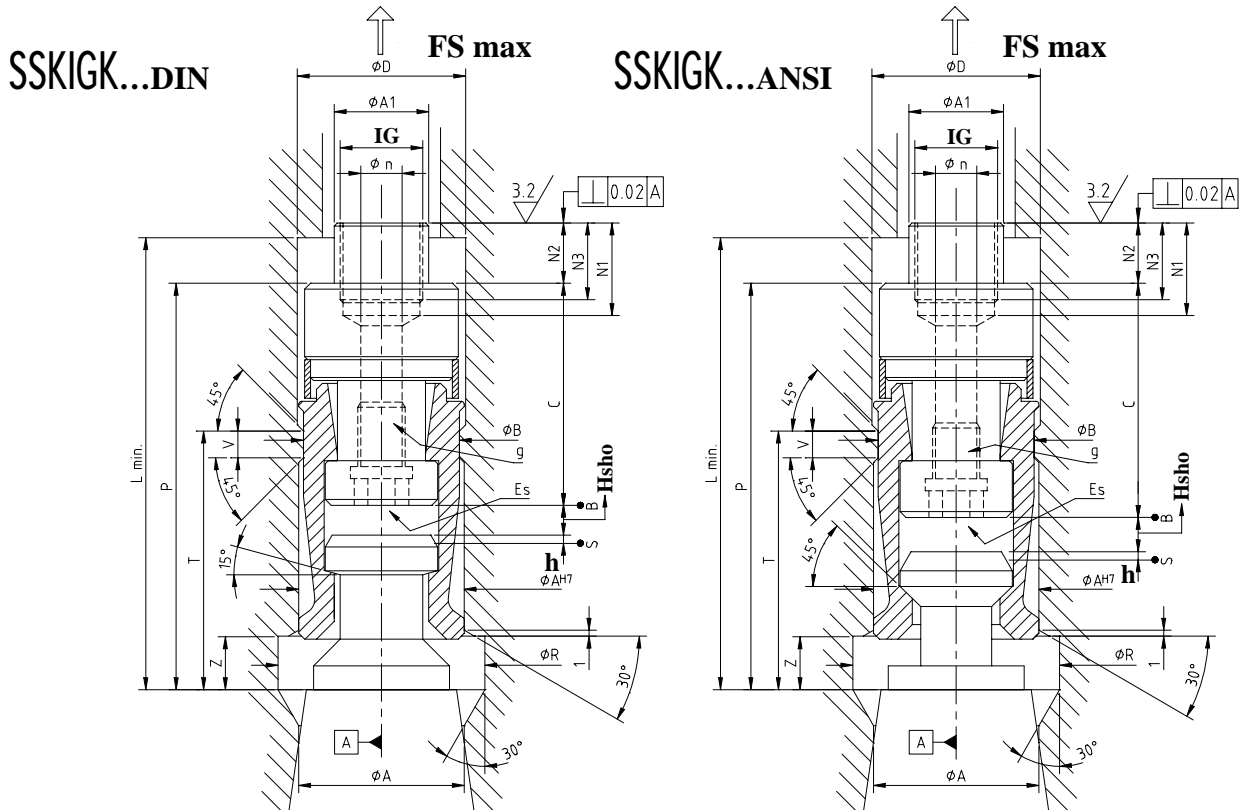
NOTE					
FS max	Forza Bloccaggio kN	Clamping force kN	Spannkraft kN	Force de blocage kN	Fuerza de bloqueo kN
B	Posizione di bloccaggio	Clamping position	Spannposition	Position de blocage	Posicion de bloqueo
S	Posizione di sbloccaggio	Unblocking position	Abspannposition	Position de déblocage	Posicion de desbloqueo
ES	Esagono di manovra	Operating hexagon	Bedienungssechskant	Hexagone manoevre	Exagóno de maniobra
IG	Filetto interno	Internal thread	Innen Gewinde	Filet intérieur	Rosca interior
g	Filetto sicurezza	Safety thread	Sicherheitsgewinde	Assurence Filet	Rosca de seguridad
Hstd	Corsa sbloccaggio standard	Unblocking stroke standard	Abspannhub standard	Course de déblocage standard	Carrera de desbloqueo normal
h	Corsa di espulsione	Expulsion stroke	Ausstosshub	Course d'expulsion	Carrera de expulsión
M	Momento forza serraggio	Clamping torque force	Anziehmoment	Moment force de serrage	Momento fuerza de bloqueo



TYPE	ISO	CODE	ISO	CODE	ISO	CODE	ISO	CODE	ISO	CODE
SSKIG.....DIN			40	38.154	45	38.156	50	38.158	60	38.160
SSKIG.....ANSI			40	38.164	45	38.166	50	38.168	60	38.170
φ A H7	mm			28		36		43		62
φ B	mm			26.4 (+0.1)		33.7 (+0.1)		40.4 (+0.1)		58.6 (+0.1)
φ D min	mm			28.5		36.5		43.5		62.5
φ R	mm			35		45		54		74
IG	mm			M 14x1.5		M 16x1.5		M 18x1.5		M 25x1.5
g	mm			M 8		M 8		M 10		M 16
L min	mm			76		84		95		115
P	mm			65		75		87		110
φ A1	mm			20		24		28		35
N1	mm			20		23		23		35
N2	mm			11		11		11		15
N3	mm			17		20		20		30
T	mm			43.5 (-0.2)		50 (-0.2)		58 (-0.2)		72.5 (-0.2)
Z	mm			9		12		14		18
V	mm			4.5		4.5		5		6.5
φ n	mm			7		7		8.5		15
C DIN	mm			34		38		45		59.5
C ANSI	mm			44.7		48		54.5		62
Hstd DIN	mm			5		7		8		10.5
Hstd ANSI	mm			4.2		6		7		10
h	mm			2 max		2 max		2 max		2 max
FS max	kN			18		25		35		70
M	Nm			65		110		160		450
ES	mm			8		8		10		17

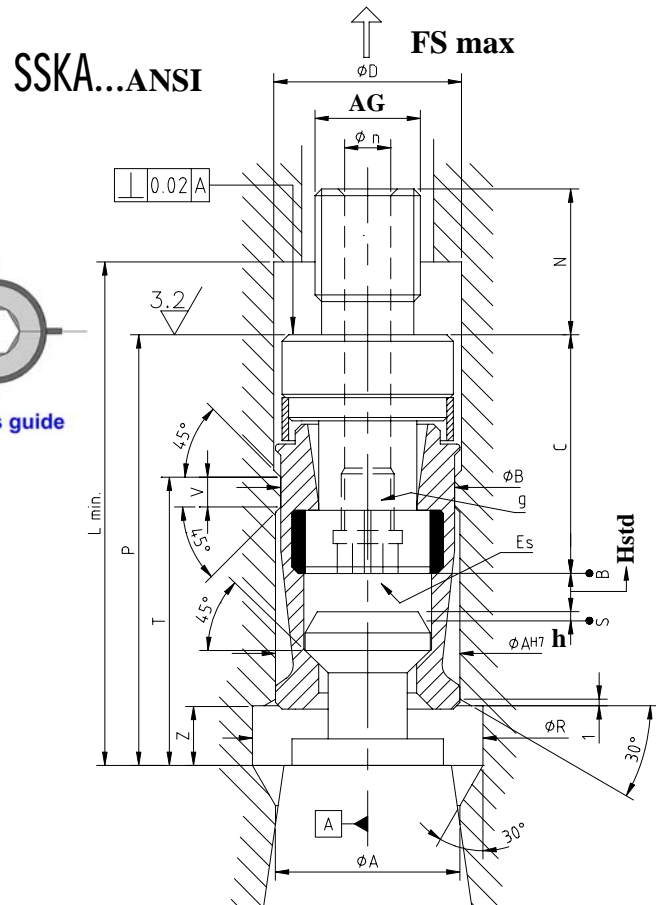
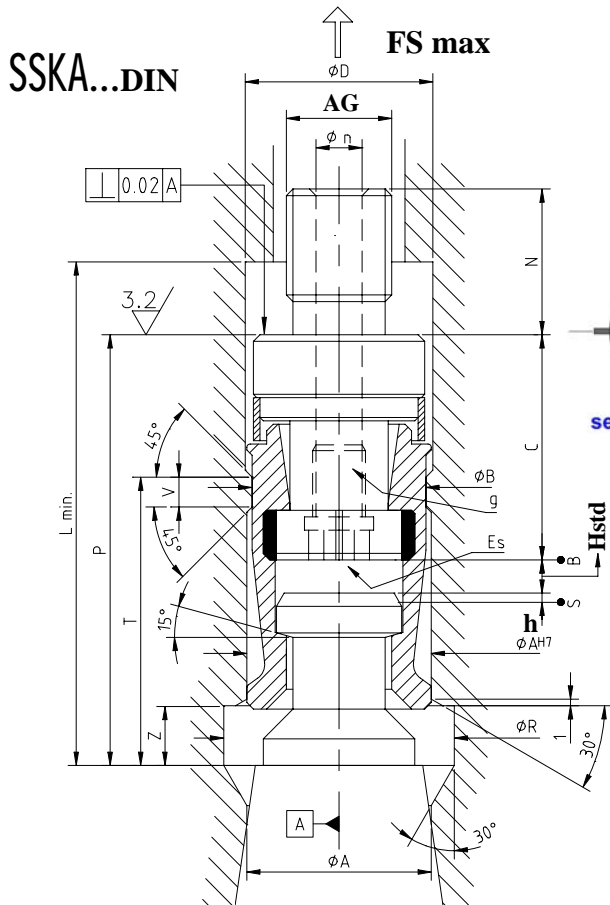


NOTE					
FS max	Forza Bloccaggio kN	Clamping force kN	Spannkraft kN	Force de blocage kN	Fuerza de bloqueo kN
B	Posizione di bloccaggio	Clamping position	Spannposition	Position de blocage	Posición de bloqueo
S	Posizione di sbloccaggio	Unlocking position	Abspannposition	Position de déblocage	Posición de desbloqueo
ES	Esagono di manovra	Operating hexagon	Bedienungssechskant	Hexagone manoeuvre	Exagono de manobra
IG	Filetto interno	Internal thread	innen Gewinde	Filet intérieur	Rosca interior
g	Filetto sicurezza	Safety thread	Sicherheitsgewinde	Assurance Filet	Rosca de seguridad
Hsho	Corsa sbloccaggio corta	Unlocking short stroke	Abspannhub kurz	Course de déblocage courte	Carrera de desbloqueo corta
h	Corsa di espulsione	Expulsion stroke	Ausstosshub	Course d'expulsion	Carrera de expulsión
M	Momento forza serraggio	Clamping torque force	Anziehmoment	Moment force de serrage	Momento fuerza de bloqueo



TYPE	ISO	CODE	ISO	CODE	ISO	CODE	ISO	CODE	ISO	CODE
SSKIGK.....DIN			40	38.174	45	38.176	50	38.178	60	38.180
SSKIGK.....ANSI			40	38.184	45	38.186	50	38.188	60	38.190
∅ A H7	mm			28		36		43		62
∅ B	mm			26.4 (+0.1)		33.7 (+0.1)		40.4 (+0.1)		58.6 (+0.1)
∅ D min	mm			28.5		36.5		43.5		62.5
∅ R	mm			35		45		54		74
IG	mm			M 14x1.5		M 16x1.5		M 18x1.5		M 25x1.5
g	mm			M 8		M 8		M 10		M 16
L min	mm			76		84		95		115
P	mm			65		75		87		110
∅ A1	mm			20		24		28		35
N1	mm			20		23		23		35
N2	mm			11		11		11		15
N3	mm			17		20		20		30
T	mm			43.5 (-0.2)		50 (-0.2)		58 (-0.2)		72.5 (-0.2)
Z	mm			9		12		14		18
V	mm			4.5		4.5		5		6.5
∅ n	mm			7		7		8.5		15
C DIN	mm			35.5		41.5		49.5		63.5
C ANSI	mm			45.4		50.5		58		65.4
Hsho DIN	mm			3.5		3.5		3.5		6.5
Hsho ANSI	mm			3.5		3.5		3.5		6.5
h	mm			0.5 min		0.5 min		0.5 min		0.5 min
FS max	kN			18		25		35		70
M	Nm			65		110		160		450
ES	mm			8		8		10		17

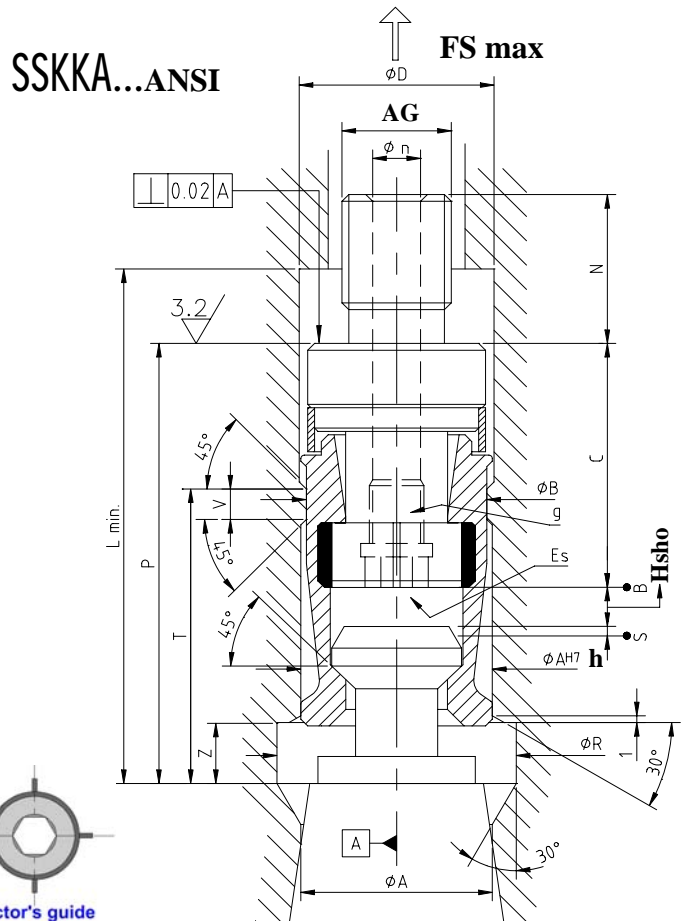
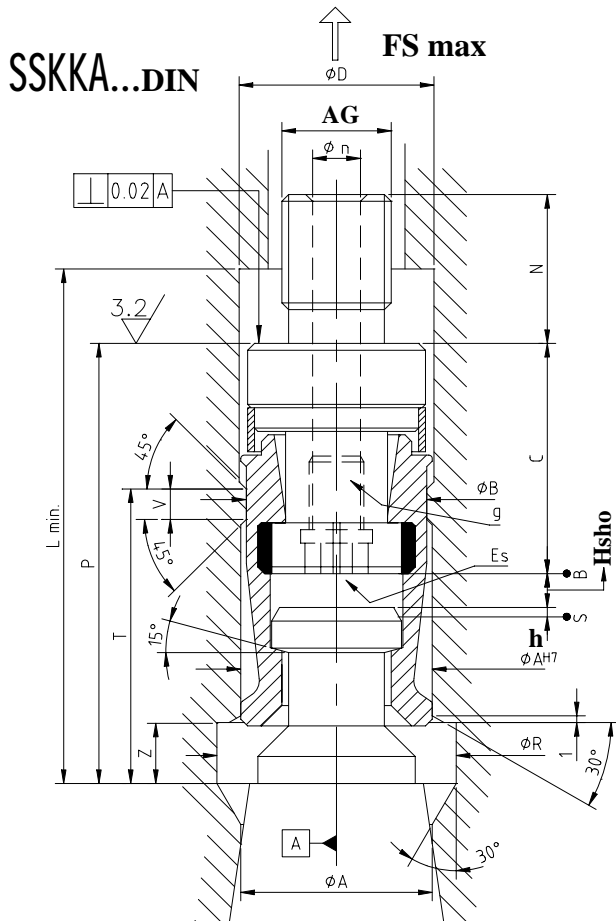
NOTE					
FS max	Forza Bloccaggio kN	Clamping force kN	Spannkraft kN	Force de blocage kN	Fuerza de bloqueo kN
B	Posizione di bloccaggio	Clamping position	Spannposition	Position de blocage	Posicion de bloqueo
S	Posizione di sbloccaggio	Unblocking position	Abspannposition	Position de déblocage	Posicion de desbloqueo
ES	Esagono di manovra	Operating hexagon	Bedienungsexchskant	Hexagone manoeuvre	Exagóno de maniobra
AG	Filetto esterno	External thread	aussen Gewinde	Filet extérieur	Rosca exterior
g	Filetto sicurezza	Safety thread	Sicherheitsgewinde	Assurance Filet	Rosca de seguridad
Hstd	Corsa sbloccaggio standard	Unblocking stroke standard	Abspannhub standard	Course de déblocage standard	Carrera de desbloqueo normal
h	Corsa di espulsione	Expulsion stroke	Ausstosshub max	Course d'expulsion	Carrera de expulsión
M	Momento forza serraggio	Clamping torque force	Anziehmoment	Moment force de serrage	Momento fuerza de bloqueo
(db)	Equilibratura dinamica	Dynamic balancing	dynamische Auswuchtung	Equilibrage dynamique	Equilibrio dinámico



TYPE	ISO	CODE	ISO	CODE	ISO	CODE	ISO	CODE	ISO	CODE
SSKA.....DIN	30	38.202	40	38.204	45	38.206	50	38.208	60	38.210
SSKA.....ANSI	30	38.212	40	38.214	45	38.216	50	38.218	60	38.220
ϕ A H7	mm	19		28		36		43		62
ϕ B	mm	17.8 (+0.1)		26.4 (+0.1)		33.7 (+0.1)		40.4 (+0.1)		58.6 (+0.1)
ϕ D min	mm	19.5		28.5		36.5		43.5		62.5
ϕ R	mm	24		35		45		54		74
AG	mm	M 10		M 16x1.5		M 18x1.5		M 22x1.5		M 30x1.5
g	mm	- - -		M 8		M 8		M 10		M 16
L min	mm	50		76		84		95		115
P	mm	47		65		75		87		110
N	mm	20		22		30		30		35
T	mm	37 (-0.1)		43.5 (-0.2)		50 (-0.2)		58 (-0.2)		72.5 (-0.2)
Z	mm	7.5		9		12		14		18
V	mm	3.5		4.5		4.5		5		6.5
ϕ n	mm	4		7		7		8.5		15
C DIN	mm	19.5		34		38		45		59.5
C ANSI	mm	33		44.7		48		54.5		62
Hstd DIN	mm	3.5		5		7		8		10.5
Hstd ANSI	mm	2.5		4.2		6		7		10
h	mm	2 max		2 max		2 max		2 max		2 max
FS max	kN	10		18		25		35		70
M	Nm	30		65		110		160		450
ES	mm	6		8		8		10		17

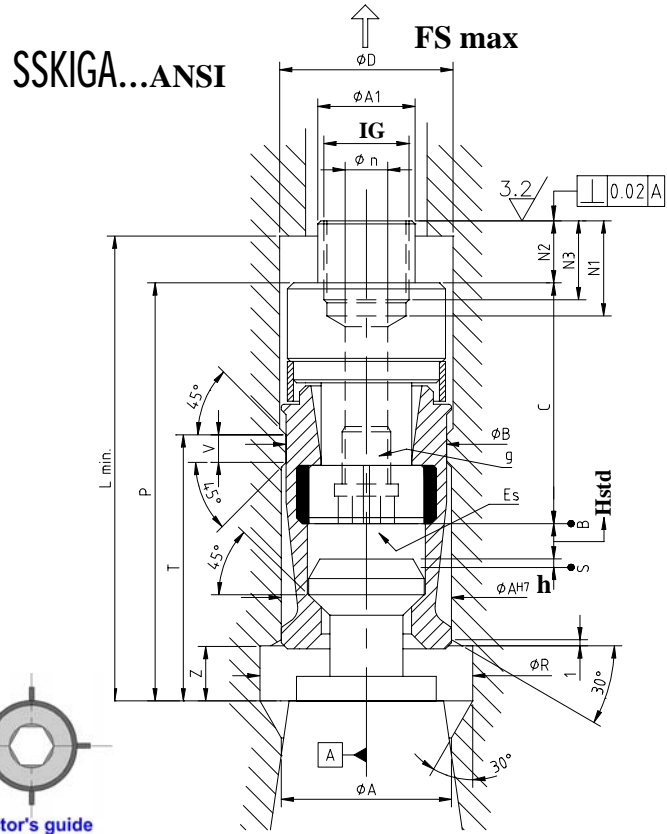
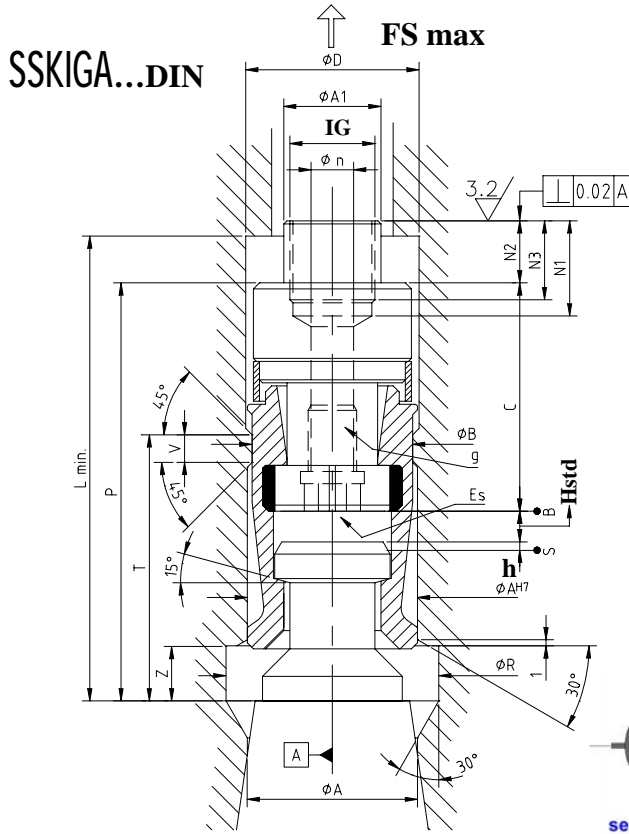


NOTE					
FS max	Forza Bloccaggio kN	Clamping force kN	Spannkraft kN	Force de blocage kN	Fuerza de bloqueo kN
B	Posizione di bloccaggio	Clamping position	Spannposition	Position de blocage	Posición de bloqueo
S	Posizione di sbloccaggio	Unlocking position	Abspannposition	Position de déblocage	Posición de desbloqueo
ES	Esagono di manovra	Operating hexagon	Bedienungssechskant	Hexagone manoeuvre	Exagòno de maniobra
AG	Filetto esterno	External thread	aussen Gewinde	Filet extérieur	Rosca exterior
g	Filetto sicurezza	Safety thread	Sicherheitsgewinde	Assurance Filet	Rosca de seguridad
Hsho	Corsa sbloccaggio corta	Unlocking short stroke	Abspannhub kurz	Course de déblocage courte	Carrera de desbloqueo corta
h	Corsa di espulsione	Expulsion stroke	Ausstosshub	Course d'expulsion	Carrera de expulsión
M	Momento forza serraggio	Clamping torque force	Anziehmoment	Moment force de serrage	Momento fuerza de bloqueo
(db)	Equilibratura dinamica	Dynamic balancing	dynamische Auswuchtung	Equilibrage dynamique	Equilibrio dinámico



TYPE	ISO	CODE	ISO	CODE	ISO	CODE	ISO	CODE	ISO	CODE
SSKKA.....DIN	30	38.222	40	38.224	45	38.226	50	38.228	60	38.230
SSKKA.....ANSI			40	38.234	45	38.236	50	38.238	60	38.240
φ A H7	mm	19		28		36		43		62
φ B	mm	17.8 (+0.1)		26.4 (+0.1)		33.7 (+0.1)		40.4 (+0.1)		58.6 (+0.1)
φ D min	mm	19.5		28.5		36.5		43.5		62.5
φ R	mm	24		35		45		54		74
AG	mm	M10		M 16x1.5		M 18x1.5		M 22x1.5		M 30x1.5
G	mm	---		M 8		M 8		M 10		M 16
L min	mm	50		76		84		95		115
P	mm	47		65		75		87		110
N	mm	20		22		30		30		35
T	mm	37 (-0.1)		43.5 (-0.2)		50 (-0.2)		58 (-0.2)		72.5 (-0.2)
Z	mm	7.5		9		12		14		18
V	mm	3.5		4.5		4.5		5		6.5
φ n	mm	4		7		7		8.5		15
C DIN	mm	20.5		35.5		41.5		49.5		63.5
C ANSI	mm	--		45.4		50.5		58		65.4
Hsho DIN	mm	2.5		3.5		3.5		3.5		6.5
Hsho ANSI	mm	--		3.5		3.5		3.5		6.5
h	mm	0.5 min		0.5 min		0.5 min		0.5 min		0.5 min
FS max	kN	10		18		25		35		70
M	Nm	30		65		110		160		450
ES	mm	6		8		8		10		17

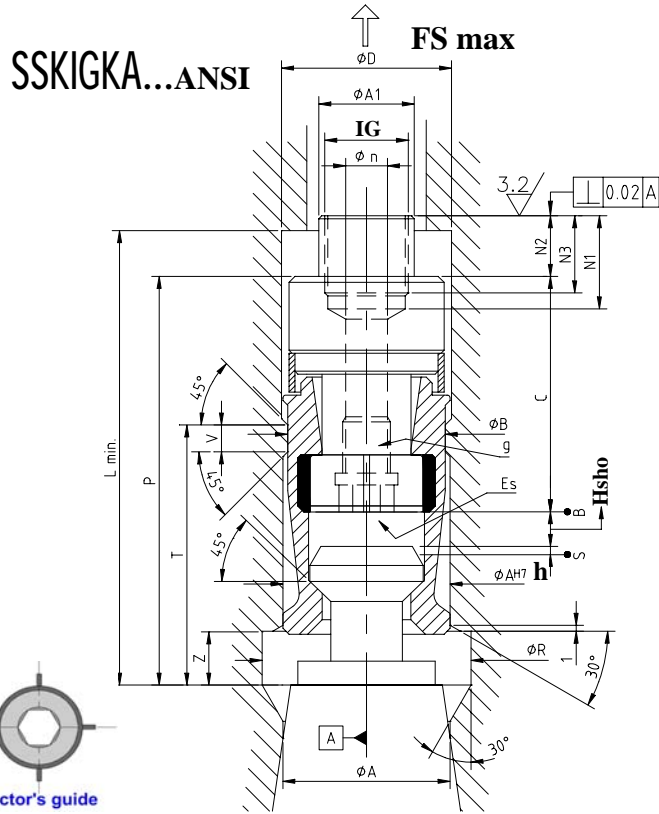
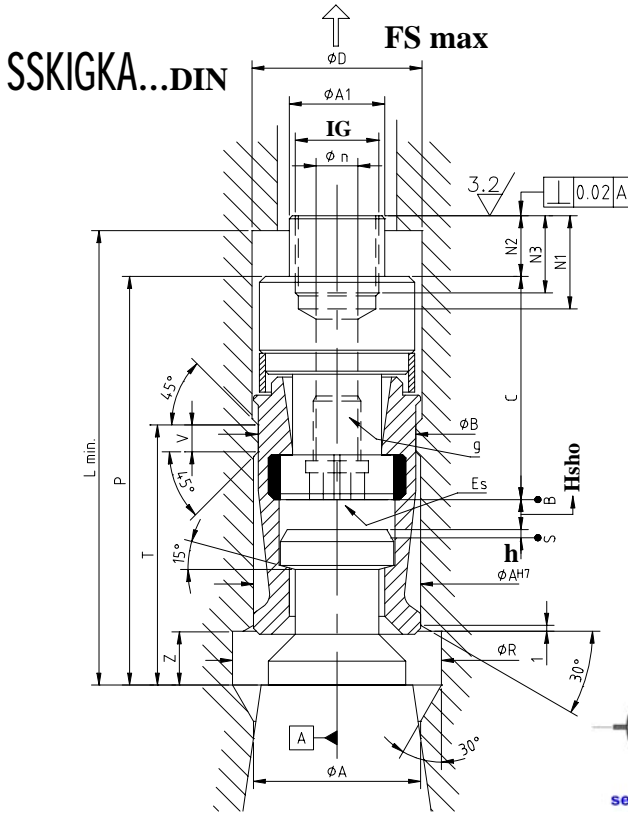
NOTE					
FS max	Forza Bloccaggio kN	Clamping force kN	Spannkraft kN	Force de blocage kN	Fuerza de bloqueo kN
B	Posizione di bloccaggio	Clamping position	Spannposition	Position de blocage	Posición de bloqueo
S	Posizione di sbloccaggio	Unblocking position	Abspannposition	Position de déblocage	Posición de desbloqueo
ES	Esagono di manovra	Operating hexagon	Bedienungssechskant	Hexagone manoeuvre	Exagóno de maniobra
IG	Filetto interno	Internal thread	innen Gewinde	Filet intérieur	Rosca interior
g	Filetto sicurezza	Safety thread	Sicherheitsgewinde	Assurance Filet	Rosca de seguridad
Hstd	Corsa sbloccaggio standard	Unblocking stroke standard	Abspannhub standard	Course de déblocage standard	Carrera de desbloqueo normal
h	Corsa di espulsione	Expulsion stroke	Ausstosshub	Course d'expulsion	Carrera de expulsión
M	Momento forza serraggio	Clamping torque force	Anziehmoment	Moment force de serrage	Momento fuerza de bloqueo
(db)	Equilibratura dinamica	Dynamic balancing	dynamische Auswuchtung	Equilibrage dynamique	Equilibrio dinámico



TYPE	ISO	CODE	ISO	CODE	ISO	CODE	ISO	CODE	ISO	CODE
SSKIGA.....DIN			40	38.254	45	38.256	50	38.258	60	38.260
SSKIGA.....ANSI			40	38.264	45	38.266	50	38.268	60	38.270
$\phi A \text{ H7}$	mm			28		36		43		62
ϕB	mm			26.4 (+0.1)		33.7 (+0.1)		40.4 (+0.1)		58.6 (+0.1)
$\phi D \text{ min}$	mm			28.5		36.5		43.5		62.5
ϕR	mm			35		45		54		74
IG	mm			M 14x1.5		M 16x1.5		M 18x1.5		M 25x1.5
G	mm			M 8		M 8		M 10		M 16
L min	mm			76		84		95		115
P	mm			65		75		87		110
$\phi A1$	mm			20		24		28		35
N1	mm			20		23		23		35
N2	mm			11		11		11		15
N3	mm			17		20		20		30
T	mm			43.5 (-0.2)		50 (-0.2)		58 (-0.2)		72.5 (-0.2)
Z	mm			9		12		14		18
V	mm			4.5		4.5		5		6.5
ϕn	mm			7		7		8.5		15
C DIN	mm			34		38		45		59.5
C ANSI	mm			44.7		48		54.5		62
Hstd DIN	mm			5		7		8		10.5
Hstd ANSI	mm			4.2		6		7		10
h	mm			2 max		2 max		2 max		2 max
FS max	kN			18		25		35		70
M	Nm			65		110		160		450
ES	mm			8		8		10		17



NOTE					
FS max	Forza Bloccaggio kN	Clamping force kN	Spannkraft kN	Force de blocage kN	Fuerza de bloqueo kN
B	Posizione di bloccaggio	Clamping position	Spannposition	Position de blocage	Posicion de bloqueo
S	Posizione di sbloccaggio	Unblocking position	Abspannposition	Position de déblocage	Posicion de desbloqueo
ES	Esagono di manovra	Operating hexagon	Bedienungssechskant	Hexagone manoeuvre	Exagòno de maniobra
IG	Filetto interno	Internal thread	innen Gewinde	Filet intérieur	Rosca interior
g	Filetto sicurezza	Safety thread	Sicherheitsgewinde	Assurance Filet	Rosca de seguridad
Hsho	Corsa sbloccaggio corta	Unblocking short stroke	Abspannhub kurz	Course de déblocage courte	Carrera de desbloqueo corta
h	Corsa di espulsione	Expulsion stroke	Ausstosshub	Course d'expulsion	Carrera de expulsión
M	Momento forza serraggio	Clamping torque force	Anziehmoment	Moment force de serrage	Momento fuerza de bloqueo
(db)	Equilibratura dinamica	Dynamic balancing	dynamische Auswuchtung	Equilibrage dynamique	Equilibrio dinámico

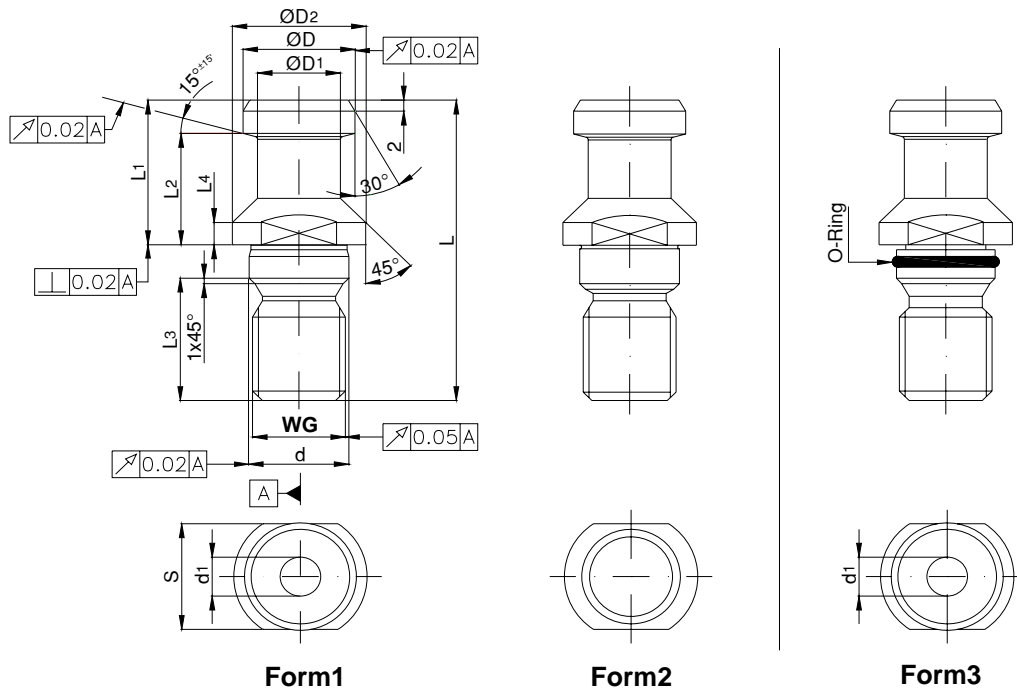


TYPE	ISO	CODE	ISO	CODE	ISO	CODE	ISO	CODE	ISO	CODE
SSKIGKA.....DIN			40	38.274	45	38.276	50	38.278	60	38.280
SSKIGKA.....ANSI			40	38.284	45	38.286	50	38.288	60	38.290
Ø A H7	mm			28		36		43		62
Ø B	mm			26.4 (+0.1)		33.7 (+0.1)		40.4 (+0.1)		58.6 (+0.1)
Ø D min	mm			28.5		36.5		43.5		62.5
Ø R	mm			35		45		54		74
IG	mm			M 14x1.5		M 16x1.5		M 18x1.5		M 25x1.5
g	mm			M 8		M 8		M 10		M 16
L min	mm			76		84		95		115
P	mm			65		75		87		110
Ø A1	mm			20		24		28		35
N1	mm			20		23		23		35
N2	mm			11		11		11		15
N3	mm			17		20		20		30
T	mm			43.5 (-0.2)		50 (-0.2)		58 (-0.2)		72.5 (-0.2)
Z	mm			9		12		14		18
V	mm			4.5		4.5		5		6.5
Ø n	mm			7		7		8.5		15
C DIN	mm			35.5		41.5		49.5		63.5
C ANSI	mm			45.4		50.5		58		65.4
Hsho DIN	mm			3.5		3.5		3.5		6.5
Hsho ANSI	mm			3.5		3.5		3.5		6.5
h	mm			0.5 min		0.5 min		0.5 min		0.5 min
FS max	kN			18		25		35		70
M	Nm			65		110		160		450
ES	mm			8		8		10		17



NOTE					
ps	Codolo	Pull studs	Anzugsbolzen	Tirettes	Tirante de tornillo
WG	Filetto tenero	Tender thread	weiches Gewinde	Filet tendre	Rosca morbido
HV 670 ±40	Durezza Vickers	Hardness Vickers	Härte Vickers	Dureté Vickers	Dureza Vickers
HRC 58±2	Durezza Rockwell	Hardness Rockwell	Härte Rockwell	Dureté Rockwell	Dureza Rockwell

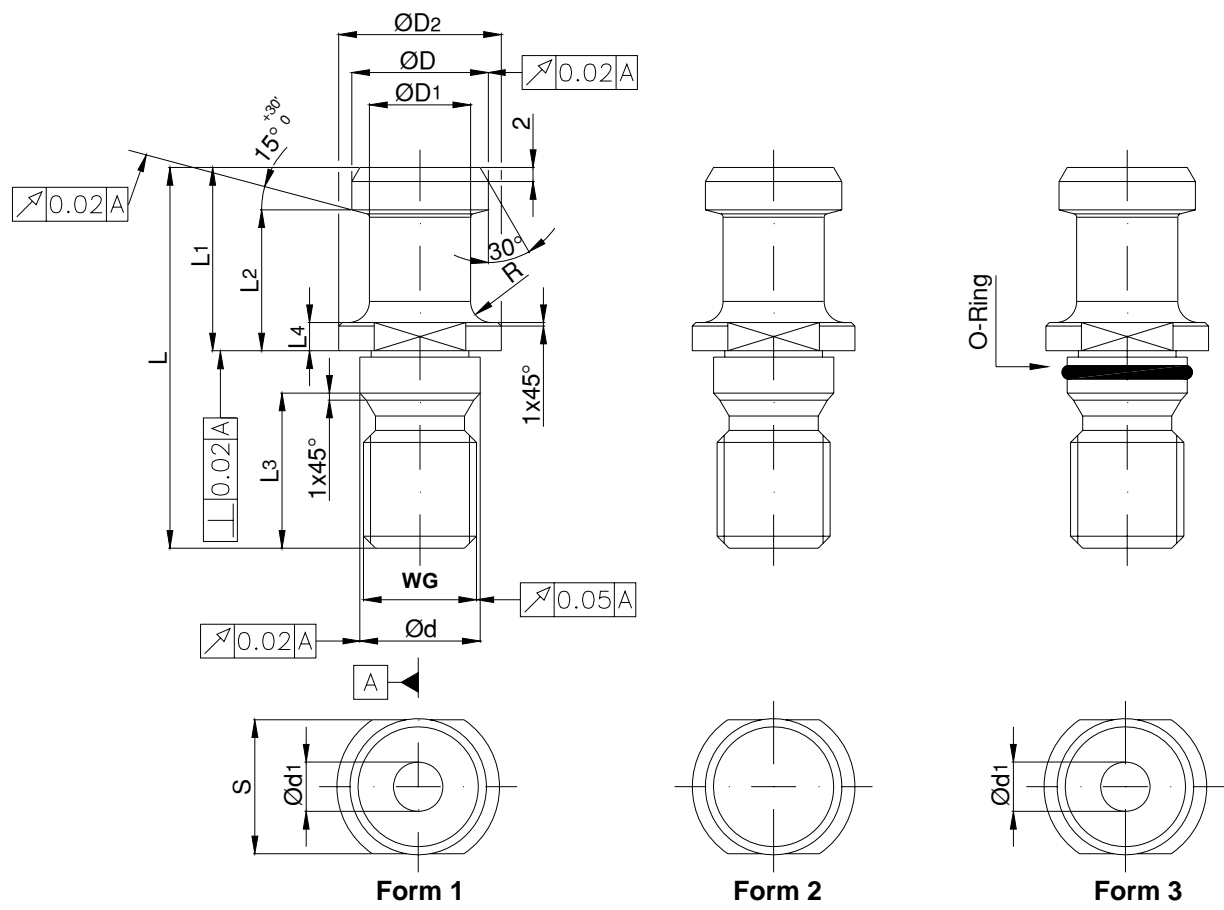
DIN 69872 A



ps No	FORM	CODE	ØD	ØD1	ØD2	Ød	WG	Ød1	L	L 1	L 2	L 3	L 4	S
			f 7	+ 0 -0.1	+ 0 -0.2	f 7	6g	+0.1 - 0	mm	±0.1	±0.1	+0.5 -0	mm	mm
			mm	mm	mm	mm	mm	mm	mm	mm	mm	mm	mm	mm
30	2	42.53.2905	13	9	17	13	M 12	-	44	24	19	15	4	14
40	1	42.52.2901	19	14	23	17	M 16	7.0	54	26	20	21	4	19
40	2	42.53.2906	19	14	23	17	M 16	-	54	26	20	21	4	19
40	3	42.54.2914	19	14	23	17	M 16	7.0	54	26	20	21	4	19
45	1	42.52.2902	23	17	30	21	M 20	9.5	65	30	23	27	5	24
45	2	42.53.2907	23	17	30	21	M 20	-	65	30	23	27	5	24
45	3	42.54.2915	23	17	30	21	M 20	9.5	65	30	23	27	5	24
50/55	1	42.52.2903	28	21	36	25	M 24	11.5	74	34	25	30	5	30
50/55	2	42.53.2908	28	21	36	25	M 24	-	74	34	25	30	5	30
50/55	3	42.54.2916	28	21	36	25	M 24	11.5	74	34	25	30	5	30
60	1	42.52.2904	40	30	52	32	M 30	14.0	90	40	30	38	6	46
60	2	42.53.2909	40	30	52	32	M 30	-	90	40	30	38	6	46

NOTE					
ps	Codolo	Pull studs	Anzugsbolzen	Tirettes	Tirante de tornillo
WG	Filetto tenero	Tender thread	weiches Gewinde	Filet tendre	Rosca morbido
HV 670 ±40	Durezza Vickers	Hardness Vickers	Härte Vickers	Dureté Vickers	Dureza Vickers
HRC 58 ±2	Durezza Rockwell	Hardness Rockwell	Härte Rockwell	Dureté Rockwell	Dureza Rockwell

ISO 7388/2 A

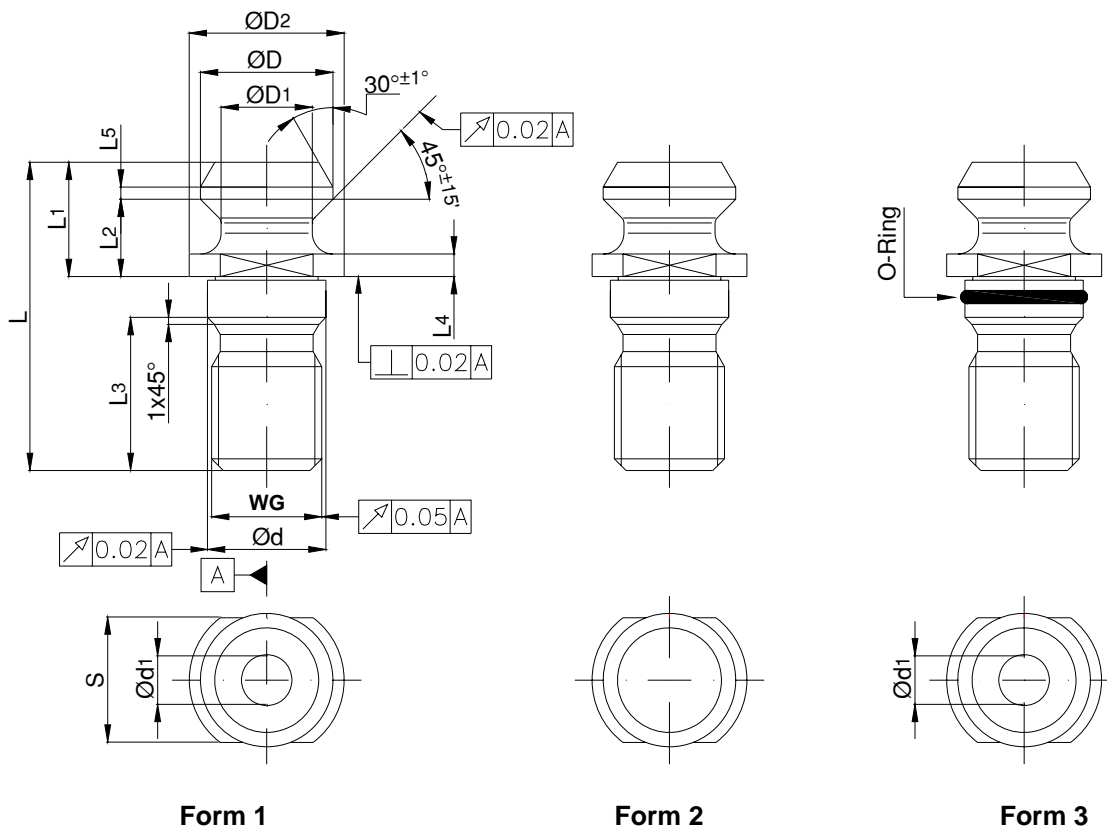


ps	FORM	CODE	$\varnothing D$ +0 -0.1 mm	$\varnothing D_1$ +0 -0.1 mm	$\varnothing D_2$ +0 -0.2 mm	$\varnothing d$ h 6 mm	WG 6g mm	$\varnothing d_1$ +0.1 - 0 mm	L mm	L 1 ± 0.1 mm	L 2 ± 0.1 mm	L 3 mm	L 4 mm	R mm	S +0 -0.1 mm
40	1	42.55.2921	19	14	23	17	M16	7.00	54	26	20	21	4	3	19
40	2	42.56.2924	19	14	23	17	M16	-	54	26	20	21	4	3	19
40	3	42.57.2928	19	14	23	17	M16	7.00	54	26	20	21	4	3	19
45	1	42.55.2922	23	17	30	21	M20	9.50	65	30	23	27	5	4	24
45	2	42.56.2925	23	17	30	21	M20	-	65	30	23	27	5	4	24
45	3	42.57.2929	23	17	30	21	M20	9.50	65	30	23	27	5	4	24
50	1	42.55.2923	28	21	36	25	M24	11.50	74	34	25	30	5	5	30
50	2	42.56.2926	28	21	36	25	M24	-	74	34	25	30	5	5	30
50	3	42.57.2931	28	21	36	25	M24	11.50	74	34	25	30	5	5	30



NOTE					
ps	Codolo	Pull studs	Anzugsbolzen	Tirettes	Tirante de tornillo
WG	Filetto tenero	Tender thread	weiches Gewinde	Filet tendre	Rosca morbido
HV 670 ±40	Durezza Vickers	Hardness Vickers	Härte Vickers	Dureté Vickers	Dureza Vickers
HRC 58 ±2	Durezza Rockwell	Hardness Rockwell	Härte Rockwell	Dureté Rockwell	Dureza Rockwell

ISO 7388/2 B



Form 1

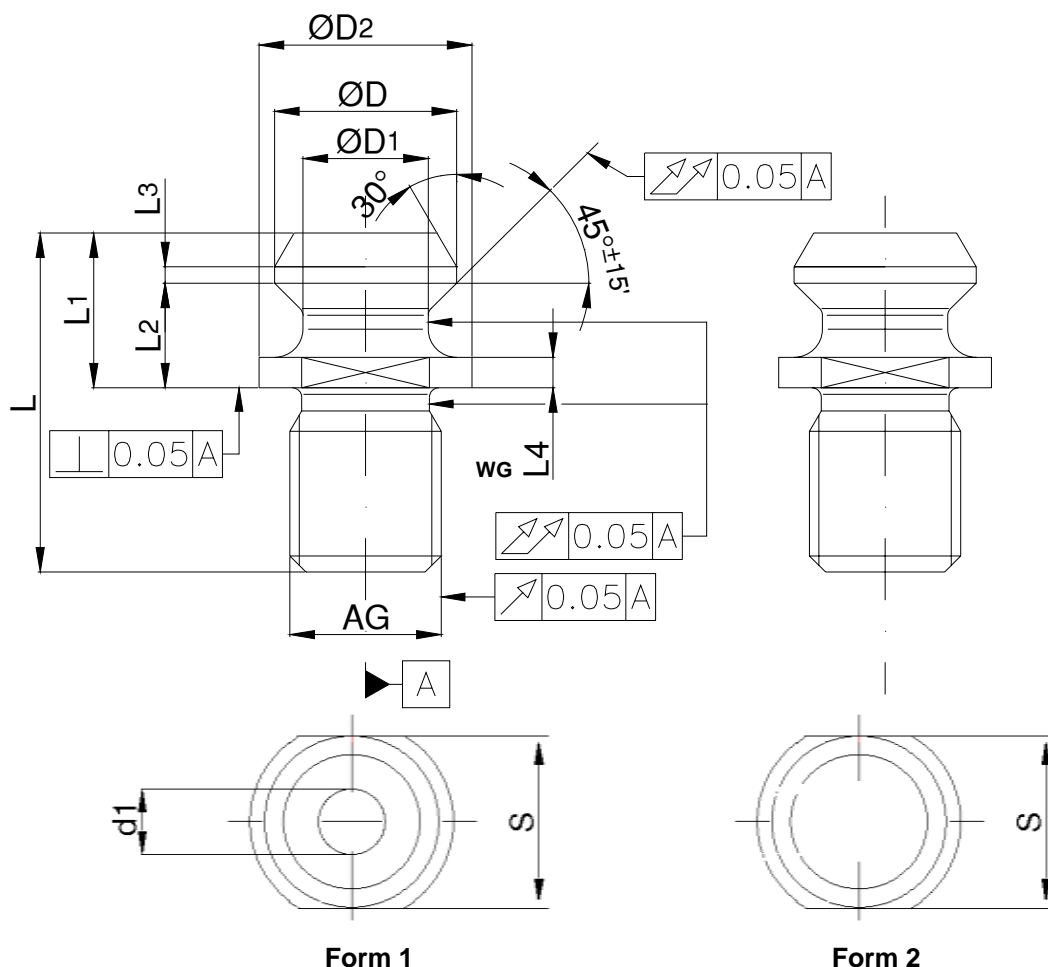
Form 2

Form 3

ps No	FORM	CODE	ØD	ØD1	Ø D2	Ød h 6	WG 6g	Ød1 +0.3 -0	L	L 1	L 2	L 3	L 4	L 5	S	
			+0 -0.3 mm	+0 -0.3 mm						+0 -0.3 mm	+0 -0.3 mm		+0 -0.5 mm	+0 -0.5 mm		mm
40	1	42.58.2934	18.95	12.95	22.5	+0.0 -1.0	17	M16	7.35	44.5	16.40	11.15	21.10	3.25	1.75	18.0
40	2	42.59.2939	18.95	12.95	22.5		17	M16	-	44.5	16.40	11.15	21.10	3.25	1.75	18.0
40	3	42.60.2943	18.95	12.95	22.5		17	M16	7.35	44.5	16.40	11.15	21.10	3.25	1.75	18.0
45	1	42.58.2935	24.05	16.30	30.0	+0.0 -2.0	21	M20	9.25	56.0	20.95	14.85	27.05	4.25	2.25	24.0
45	2	42.59.2940	24.05	16.30	30.0		21	M20	-	56.0	20.95	14.85	27.05	4.25	2.25	24.0
45	3	42.60.2944	24.05	16.30	30.0		21	M20	9.25	56.0	20.95	14.85	27.05	4.25	2.25	24.0
50	1	42.58.2936	29.10	19.60	37.0	+0.0 -2.0	25	M24	11.55	65.5	25.55	17.95	29.95	5.25	2.75	30.0
50	2	42.59.2941	29.10	19.60	37.0		25	M24	-	65.5	25.55	17.95	29.95	5.25	2.75	30.0
50	3	42.60.2945	29.10	19.60	37.0		25	M24	11.55	65.5	25.55	17.95	29.95	5.25	2.75	30.0

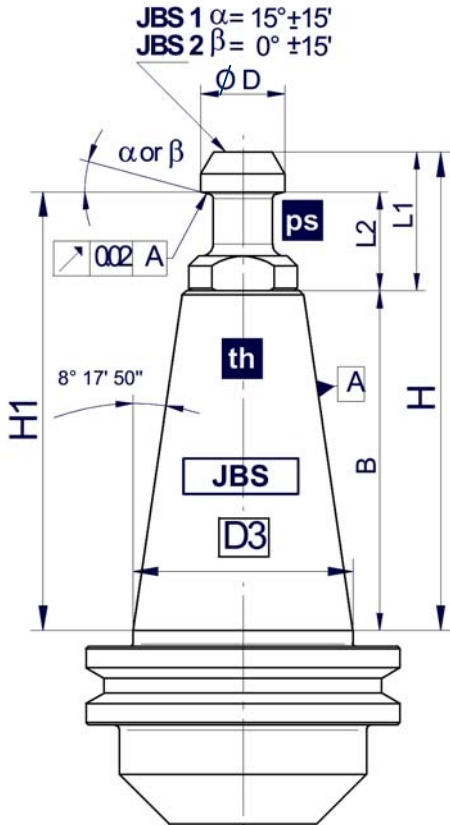
NOTE					
ps	Codolo	Pull studs	Anzugsbolzen	Tirettes	Tirante de tornillo
WG	Filetto tenero	Tender thread	weiches Gewinde	Filet tendre	Rosca morbido
HV 670 ±40	Durezza Vickers	Hardness Vickers	Härte Vickers	Dureté Vickers	Dureza Vickers
HRC 58 ±2	Durezza Rockwell	Hardness Rockwell	Härte Rockwell	Dureté Rockwell	Dureza Rockwell

ASME B 5.50

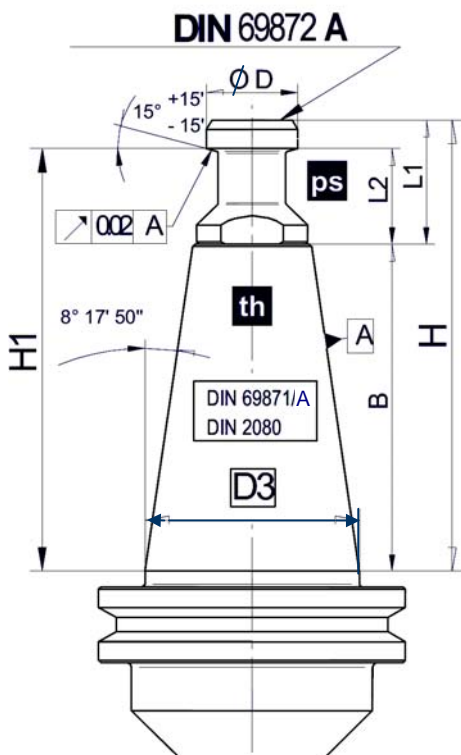


ps	FORM	CODE	WG	Ø D	Ø D1	L	L 1	L 2	L 3	L 4	Ø d1	Ø D2	S	R		
			tols. - METRIC SIZE - mm -													
			6g	±0.127	±0.127	±1.015	±0.127	±0.127	±0.254	±0.254	±0.254	MAX from	MIN to	+0.000 -0.254	+0.254 -0.127	
30	2	49.62.2959	M 12	13.21	9.78	27.94	11.68	8.13	1.01	2.54	--	16.51	16.26	13.46	2.39	
40	1	49.62.2951	M 16	18.80	12.45	38.10	16.25	11.18	1.53	3.05	7.14	23.88	23.40	19.05	2.39	
40	2	49.62.2961	M 16	18.80	12.45	38.10	16.25	11.18	1.53	3.05	--	23.88	23.40	19.05	2.39	
45	1	49.62.2953	M 20	23.88	15.37	45.72	20.83	14.74	2.04	4.07	9.52	30.48	30.00	25.40	2.39	
45	2	49.62.2963	M 20	23.88	15.37	45.72	20.83	14.74	2.04	4.07	--	30.48	30.00	25.40	2.39	
50	1	49.62.2955	M 24	28.96	20.83	58.42	25.40	17.78	2.54	5.08	11.88	36.57	36.10	31.75	3.18	
50	2	49.62.2965	M 24	28.96	20.83	58.42	25.40	17.78	2.54	5.08	--	36.57	36.10	31.75	3.18	
60	1	49.62.2957	M 30	37.08	26.55	81.28	38.10	27.44	3.56	7.62	12.70	54.35	52.32	38.10	3.18	
60	2	49.62.2967	M 30	37.08	26.55	81.28	38.10	27.44	3.56	7.62	--	54.35	52.32	38.10	3.18	

NOTE					
ps pt th	Codolo Presettaggio Mandrino porta utensile	Pull studs Presetting Tool holder	Anzugsbolzen Einstellen Werkzeugaufnahmen	Tirettes Préréglementation Mandrin porte - outil	Tirante de tornillo Preestablecimiento Mandrino porta husillo

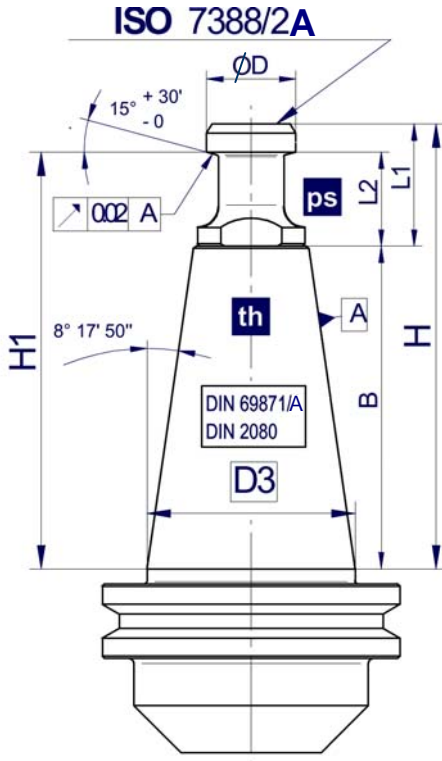


		th JBS		ps JBS 1 / 2 page 46			pt Presetting norm	
I S O	D3	B $\begin{smallmatrix} +0.1 \\ -0 \end{smallmatrix}$	L2 $\begin{smallmatrix} +0 \\ -0.1 \end{smallmatrix}$	L1 $\begin{smallmatrix} +0 \\ -0.1 \end{smallmatrix}$	ϕD $\begin{smallmatrix} +0 \\ -0.1 \end{smallmatrix}$	No	H1 ± 0.1	H ± 0.1
	mm	mm	mm	mm	mm		mm	mm
10	15.875	20.50	7.50	10.50	6.00	10 JBS 1/2	28.00	31.00
15	17.000	23.00	8.50	12.00	7.00	15 JBS 1/2	31.50	35.00
20	22.225	33.30	10.00	14.00	8.50	20 JBS 1/2	43.30	47.30
25	25.400	39.70	11.50	16.00	10.00	25 JBS 1/2	51.20	55.70

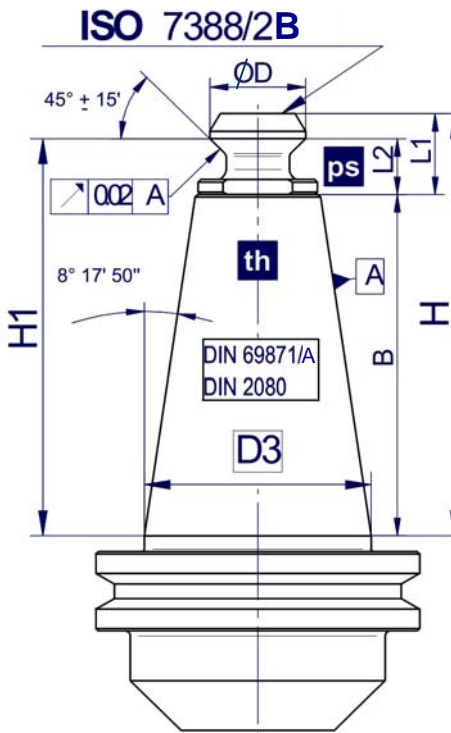


		th DIN 69871/1 DIN 2080		ps DIN 69872 A page 47			pt Presetting norm	
I S O	D3	B $\begin{smallmatrix} +0 \\ -0.3 \end{smallmatrix}$	L2 ± 0.1	L1 ± 0.1	$\phi D f 7$	No	H1 ± 0.25	H ± 0.25
	mm	mm	mm	mm	mm		mm	mm
30	31.75	47.80	19	24	13	30	66.65	71.65
40	44.45	68.40	20	26	19	40	88.25	94.25
45	57.15	82.70	23	30	23	45	105.55	112.55
50	69.85	101.75	25	34	28	50	126.60	135.60
60	107.95	161.80	30	40	40	60	191.65	201.65

NOTE					
ps pt th	Codolo Presettaggio Mandrino porta utensile	Pull studs Presetting Tool holder	Anzugsbolzen Einstellen Werkzeugaufnahmen	Tirettes Prérglémentation Mandrin porte - outil	Tirante de tornillo Preestablecimiento Mandrino porta husillo

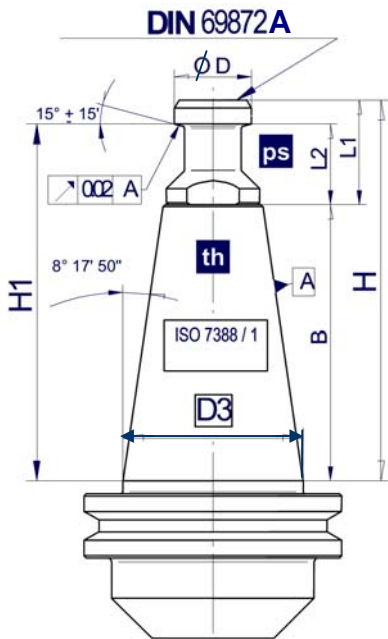


th DIN 69871-1 DIN 2080			ps ISO 7388/2 A page 48				pt Presetting norm	
I S O	D3	B ⁺⁰ / _{-0.3}	L2 ±0.1	L1 ±0.1	ØD ⁺⁰ / _{-0.1}	No	H1 ±0.25	H ±0.25
	mm	mm	mm	mm	mm		mm	mm
40	44.45	68.40	20	26	19	40	88.25	94.25
45	57.15	82.70	23	30	23	45	105.55	112.55
50	69.85	101.75	25	34	28	50	126.60	135.60

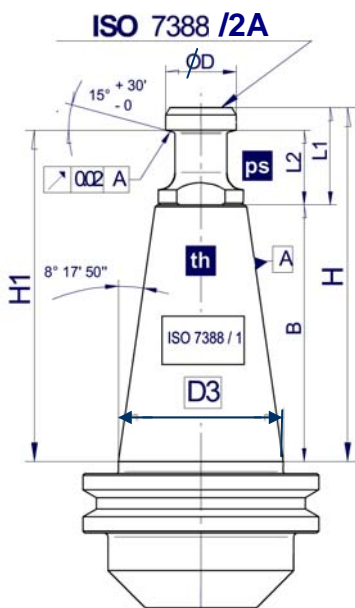


th DIN 69871-1 DIN 2080			ps ISO 7388/2 B page 49				pt Presetting norm	
I S O	D3	B ⁺⁰ / _{-0.3}	L2 ⁺⁰ / _{-0.3}	L1 ⁺⁰ / _{-0.3}	ØD ⁺⁰ / _{-0.3}	No	H1 ±0.3	H ±0.3
	mm	mm	mm	mm	mm		mm	mm
40	44.45	68.40	11.15	16.40	18.95	40	79.25	84.50
45	57.15	82.70	14.85	20.95	24.05	45	97.25	103.35
50	69.85	101.75	17.95	25.55	29.10	50	119.40	127.00

NOTE					
ps pt th	Codolo Presettaggio Mandrino porta utensile	Pull studs Presetting Tool holder	Anzugsbolzen Einstellen Werkzeugaufnahmen	Tirettes Préréglementation Mandrin porte - outil	Tirante de tornillo Preestablecimiento Mandrino porta husillo

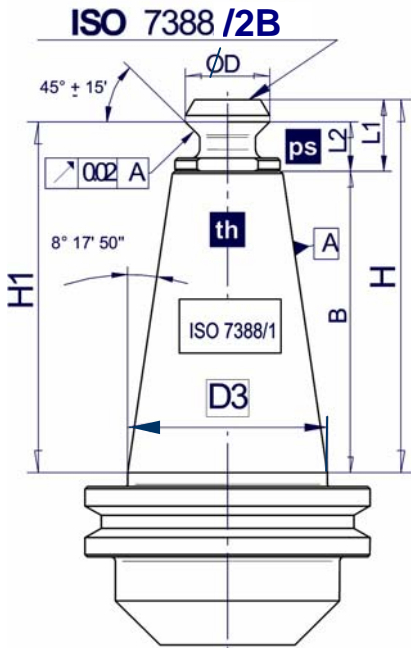


th ISO 7388/1		ps DIN 69872 A page 47				pt Presetting norm		
I S O	D3	B ⁺⁰ -0.3	L2 ±0.1	L1 ±0.1	ØD f 7	No	H1 ±0.25	H ±0.25
	mm	mm	mm	mm	mm		mm	mm
30	31.75	47.80	19	24	13	30	66.65	71.65
40	44.45	68.40	20	26	19	40	88.25	94.25
45	57.15	82.70	23	30	23	45	105.55	112.55
50	69.85	101.75	25	34	28	50	126.60	135.60
60	107.95	161.80	30	40	40	60	191.65	201.65

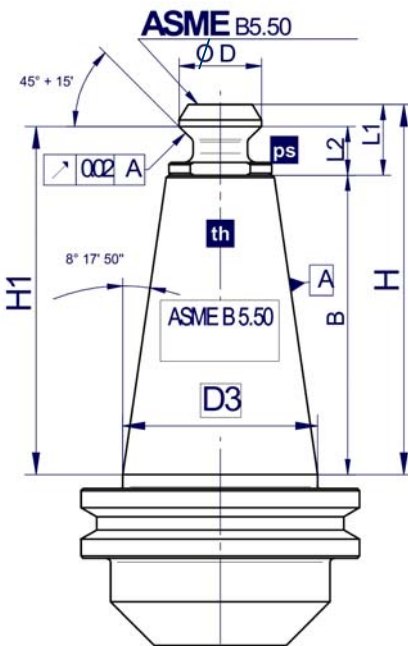


th ISO 7388/1		ps ISO 7388/2 A page 48				pt Presetting norm		
I S O	D3	B ⁺⁰ -0.3	L2 ±0.1	L1 ±0.1	ØD ⁺⁰ -0.1	No	H1 ±0.25	H ±0.25
	mm	mm	mm	mm	mm		mm	mm
40	44.45	68.40	20	26	19	40	88.25	94.25
45	57.15	82.70	23	30	23	45	105.55	112.55
50	69.85	101.75	25	34	28	50	126.60	135.60

NOTE					
ps pt th	Codolo Presettaggio Mandrino porta utensile	Pull studs Presetting Tool holder	Anzugsbolzen Einstellen Werkzeugaufnahmen	Tirettes Préréglementation Mandrin porte - outil	Tirante de tornillo Preestablecimiento Mandrino porta husillo



		th ISO 7388 / 1		ps ISO 7388/2 B page 49			pt Presetting norm	
I S O	D3	B ⁺⁰ / _{-0.3}	L2 ⁺⁰ / _{-0.3}	L1 ⁺⁰ / _{-0.3}	$\varnothing D$ ⁺⁰ / _{-0.3}	No	H1 ± 0.3	H ± 0.3
	mm	mm	mm	mm	mm		mm	mm
40	44.45	68.40	11.15	16.40	18.95	40	79.25	84.50
45	57.15	82.70	14.85	20.95	24.05	45	97.25	103.35
50	69.85	101.75	17.95	25.55	29.10	50	119.40	127.00



		th ASME B 5.50		ps ASME B 5.50 page 50			pt Presetting norm	
I S O	D3	B ± 0.127	L2 ± 0.127	L1 ± 0.127	$\varnothing D$ ± 0.127	No	H1 ± 0.25	H ± 0.25
	mm	mm	mm	mm	mm		mm	mm
30	31.75	47.625	8.13	11.68	13.20	30	55.750	59.300
40	44.45	68.250	11.18	16.25	18.80	40	79.430	84.500
45	57.15	82.550	14.74	20.83	23.87	45	97.290	103.380
50	69.85	101.600	17.78	25.40	28.96	50	119.380	127.000
60	107.95	161.922	27.44	38.10	37.08	60	189.360	200.020