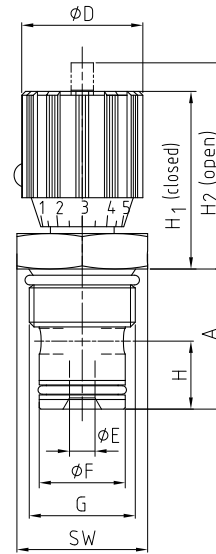


Flow control valve for cartridge assembly Steel / Stainless steel

NDVE



AVAILABLE SIZES

DN8 - DN16 (3/8" to 5/8")

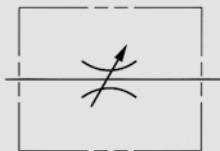
MATERIAL CODE DESCRIPTION

Materials	1A	18	4A	48
Body	Steel	Steel	Stainless Steel	Stainless Steel
O-rings	NBR	FPM	NBR	FPM
Tmin / Tmax	-20°C / 100°C	-20°C / 100°C	-30°C / 100°C	-20°C / 100°C

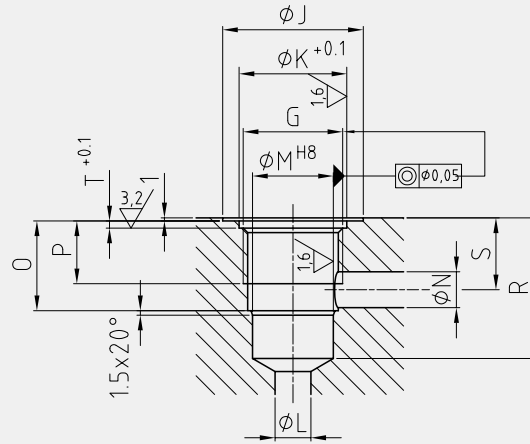
GENERAL DIMENSIONS

Type	H ₁	H ₂	H	A	E	F	SW	D	Weight [kg]
NDVE-DN8	41	47	12	27,5	5	14	27	29	0,15
NDVE-DN10	54	64	14,5	30,7	6	16	27	38	0,25
NDVE-DN12	55	65	17,5	40	8	19	32	38	0,50
NDVE-DN16	55	65	21,1	43,5	8	27	41	38	0,70

PORTING PATTERN



ASSEMBLY DIMENSIONS



ASSEMBLY DIMENSIONS												ORDER CODE PER MATERIAL COMBINATION				
Type	G ⁽¹⁾	J	K	L	M	N	O	P	R	S	T	PN [bar]	1A	18	4A	48
NDVE-DN8	G1/2	32	24	5	14	5	17,5	14	29	15	1,9	350	17280*	36703*	37741	20531
NDVE-DN10	G1/2	32	24	8	16	8	20,5	14	33	17	1,9	350	15132*	34216*	29470	30968
NDVE-DN12	G3/4	37	30	10	19	10	29	21	43	24	1,9	350	17266*	35285*	22599	11946
NDVE-DN16	G1	47	36	12	27	12	30	21	47	24	2,4	350	20312*	37742*	29471	12069

⁽¹⁾ As per DIN ISO228

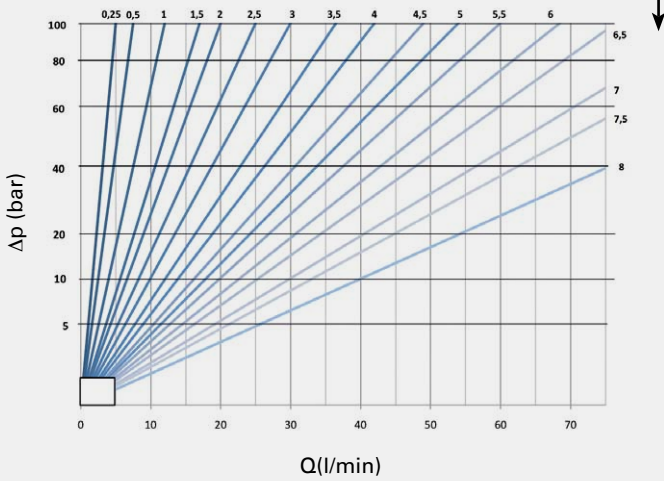
*Article usually in stock.

! Flow control valves should not be used as shut-off device. Small leakage rates may occur in fully closed position. (DIN EN 12266 – leakage rate A-B – test medium water)

The flow values are valid for hydraulic oil (spissitude 880 kg/m³) and the kinematic viscosity ν of 35 mm²/s.

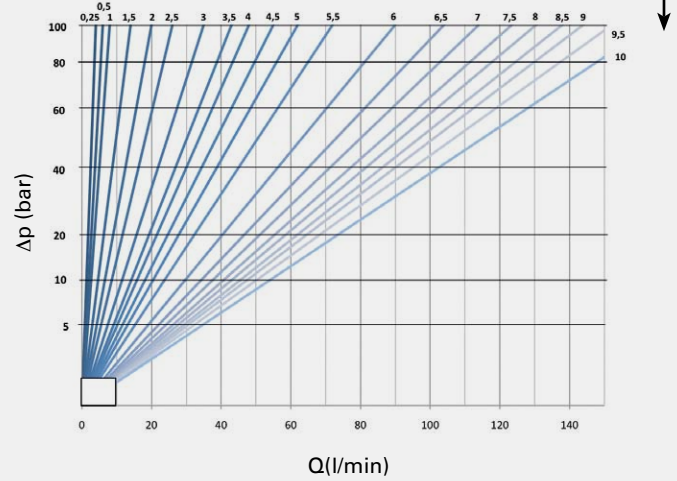
NDVE-DN8

handle turns - the higher the number, the wider open the valve



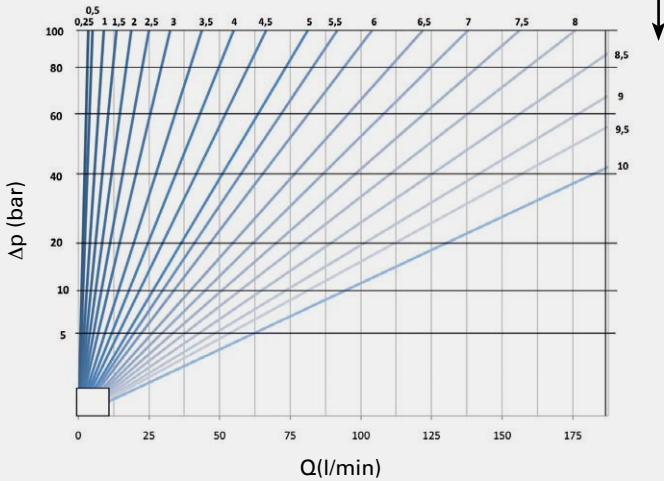
NDVE-DN10

handle turns - the higher the number, the wider open the valve



NDVE-DN12 - DN16

handle turns - the higher the number, the wider open the valve



Flow control