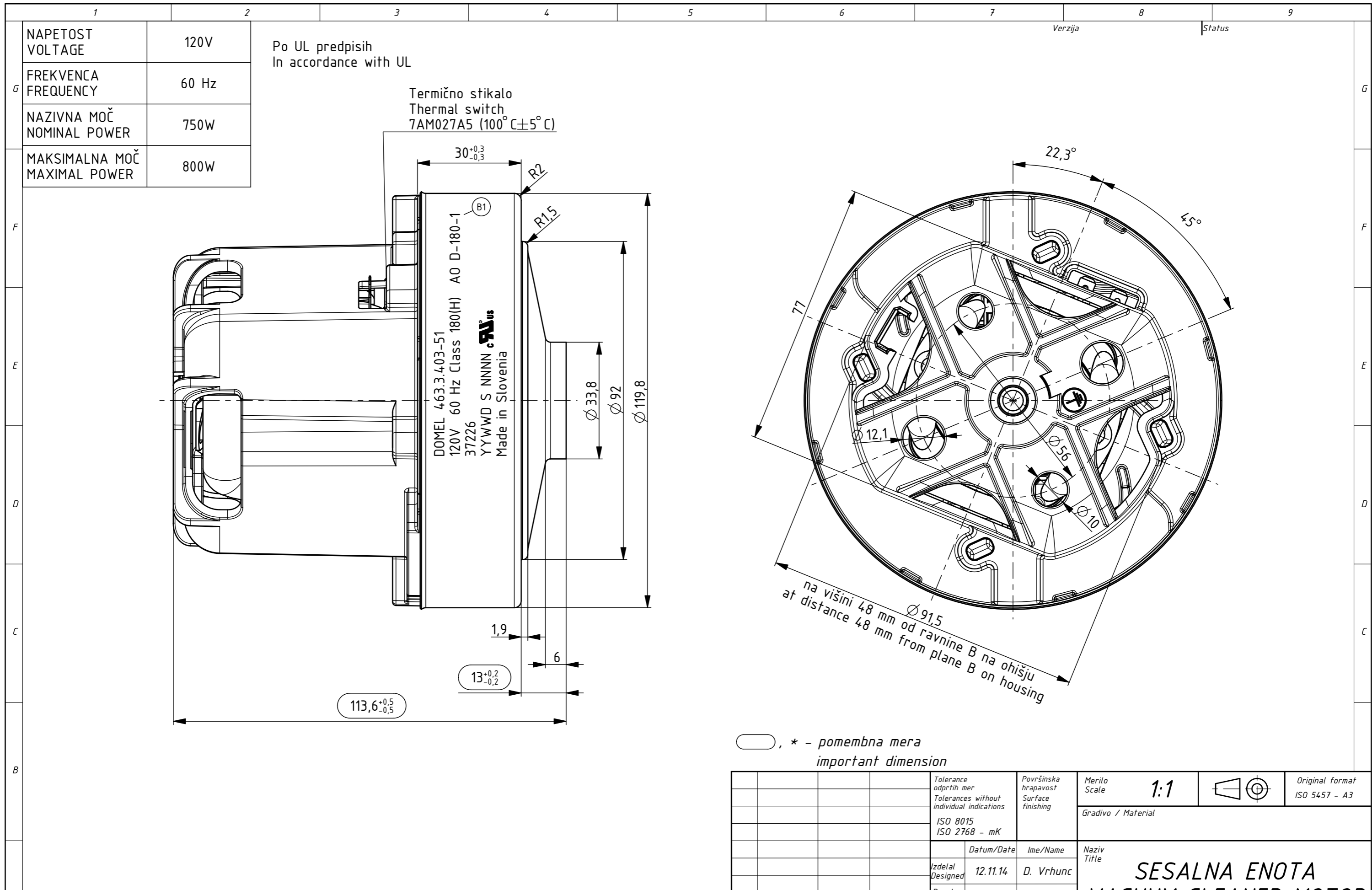


Izdelano s CAD/ProEngineer - ročno spreminjanje ni dovoljeno! Vsak prenos tretjim osebam ali uporaba v nedogovorjene namene ni dovoljena po zakonu o avtorskih pravicah. Made with CAD/ProEngineer - changing is not allowed! Any unauthorized copying of this drawing or unauthorized distribution of the information contained herein is prohibited.



○, \* - pomembna mera  
important dimension

				Tolerance odprtih mer Tolerances without individual indications ISO 8015 ISO 2768 - mK	Površinska hrapavost Surface finishing	Merilo Scale <b>1:1</b>	Original format ISO 5457 - A3
				Datum/Date	Ime/Name	Gradivo / Material	
				Izdelal Designed	12.11.14	D. Vrhunc	Naziv Title <b>SESALNA ENOTA VACUUM CLEANER MOTOR</b>
				Pregl. Verified	11.01.16	J. Rihtaršič	
				<b>DOMEL</b> Otoki 21, 4228 Železniki, Slovenija		Koda Code <b>463.3.403-51</b>	List Sheet 3+
B1	12215	11.01.16	D. Vrhunc			Stran Page 1	
A0	11579	12.11.14	D. Vrhunc				
Ozn. Mark	Št. obvestila Nr. of notice	Datum Date	Ime Name				4633403051_SESALNA_ENOTA

OSNOVNE ZNAČILNOSTI		TYPICAL CHARACTERISTICS	
IZVEDBA	ENOSTOPENJSKA	FAN SYSTEM	SINGLE STAGE
ULEŽAJENJE	DVA KROGLIČNA LEŽAJA	BEARINGS	DUAL BALL
VRSTA PRETOKA	SKOZI MOTOR	DISCHARGE	THRU FLOW
SMER VRTENJA	DESNA	DIRECTION OF ROTATION	CW