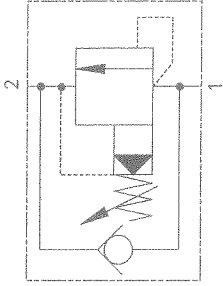


RV2-10 - Relief Valve

Poppet, pilot operated with reverse flow check
 12-114 L/min (3-30 USgpm) • 350 bar (5000 psi)



Operation

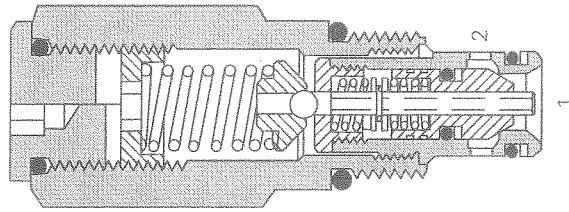
When the inlet reaches the valve setting, the pilot section opens, causing a small flow across the orifice in the poppet.

Features

Very low pressure rise for any increase in flow giving accurate pressure control. Hardened working parts give long, reliable, trouble-free life. Cartridge construction giving maximum flexibility in mounting.

The subsequent pressure drop moves the poppet, opening the valve, allowing relief flow to tank.

Sectional View



Performance Data

Ratings and Specifications

Performance data is typical with fluid at 21.8 cSt (105 SUS) and 49° C (120° F)

Typical application pressure (all ports)	350 bar (5000 psi)
Cartridge fatigue pressure (infinite life)	350 bar (5000 psi)
Rated flow range	12-114 L/min (3-30 USgpm)
Internal leakage	0.3 mL/min (5 drops/min) @ 85% of Pressure Setting
Reverse free flow check	3 bar (45 psi)
Cavity	C-10-2
Standard housing materials	Aluminum or steel
Temperature range	-40° to 120°C (-40° to 248°F)
Fluids	All general purpose hydraulic fluids such as: MIL-H-5606, SAE 10, SAE 20, etc.
Filtration	Cleanliness Code 18/16/13
Weight cartridge only	0.22 kg (0.48 lbs)
Seal kits	565803 Buna-N 566086 Viton®

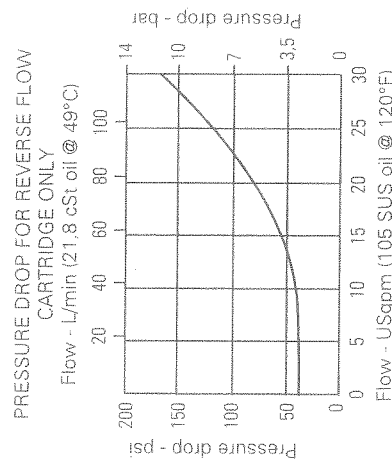
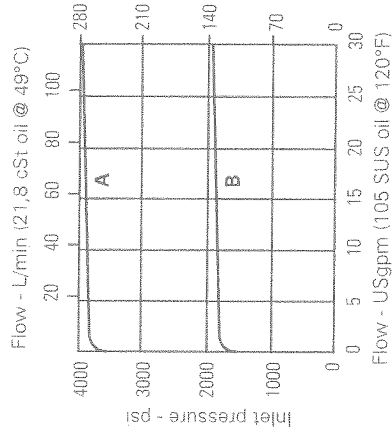
Viton is a registered trademark of E.I. DuPont

Description

This is a pilot operated relief valve with an integral free flow check designed to limit pressure in a system. Good for continuous duty and accurate pressure control with constant or varying flows With integral reverse flow check.

Pressure Override Curves

Cartridge only
 Tank pressure = 0



A - 50 Spring
 B - 20 Spring

Where measurements are critical request certified drawings. We reserve the right to change specifications without notice.

